



# Ampleforth Village

Archaeological Desk-Based Assessment

---

Ben Swain

# Ampleforth Village

## Archaeological Desk-Based Assessment

Prepared on behalf of:

North York Moors National Park Authority  
The Old Vicarage  
Bondgate  
Helmsley  
York  
YO62 5BP

Compiled by:

Ben Swain

### DigVentures

DigVentures  
Witham Studios #5  
Hall Street  
Barnard Castle  
County Durham  
DL12 8JB

hello@digventures.com  
0333 011 3990  
@thedigventurers



## Purpose of document

This archaeological desk-based assessment (DBA) has been prepared for the Ryevitalise Landscape Partnership as part of the 'Ampleforth Big Dig' project, and is being undertaken on behalf of the North York Moors National Park Authority (NYMNPA) and other stakeholders. The DBA investigates the nature of the archaeological resource and heritage assets within and around Ampleforth village to provide a basis for the next steps of the project, which comprise a community archaeology test pitting project. It conforms with current best practice and to the guidance outlined in the Chartered Institute for Archaeologists' (2017) *Standards and guidance for historic environment desk-based assessment*.

DigVentures accepts no responsibility or liability for any use that is made of this document other than by the Client for the purposes for which it was originally commissioned and prepared. DigVentures has no liability regarding the use of this report except to the NYMNPA.

## Copyright

© DigVentures Limited 2023

## Project summary

OASIS ID	Digventu1-514327
DV project code and type	ABD23 Desk Based Assessment
National Grid Reference	SE 58297 78735 (centre of village)
County	North Yorkshire
Title:	Ampleforth Village, Archaeological Desk-Based Assessment
Author(s):	Ben Swain BA ACIfA
Origination date:	10/05/23
Circulation:	Ryevitalise Landscape Partnership North York Moors National Park Authority (NYMNPA)
Reviewed by:	Kimberley Teale BSc ACIfA
Approval:	Manda Forster PhD MCIfA FSA Scot



## Social Value Act

DigVentures is a social enterprise dedicated to designing and delivering publicly focussed archaeology projects. We are constituted as a limited company, with a constitution reflecting the wider social, economic and environmental benefits of the projects we deliver.

### Carbon Footprint

A printed copy of the main text in this document will result in a carbon footprint of 99g if 100% post-consumer recycled paper is used and 126g if primary-source paper is used. These figures assume the report is printed in black and white on A4 paper and in duplex.

DigVentures is aiming to reduce its per capita carbon emissions.

## Acknowledgements

We'd like to begin with a sincere thank you to David Mennear and Amy Carrick-Knowles of the Ryevitalise Landscape Partnership project team at the North York Moors National Park Authority for commissioning us to undertake this exciting community project. Thanks are also extended to Ellie Hook and the team at the Howardian Hills AONB for their support with the project. In addition, we'd like to thank Ellie Leary at the North York Moors National Park Authority and Peter Rowe and Leonora Goldsmith at the North Yorkshire County Council, for their provision of the relevant Historic Environment Records data and advice during the Desk Based Assessment.

We would also like to thank the Ampleforth Parish Councillors; Nichola Nichols, Ed Carter, Kate Beck, Antony Straszewski and Emily Slingsby for their enthusiasm and support for the project, for assisting our site visit. Ed Carter also provided research and historic photos for the Desk Based Assessment.

Thanks are extended to Eilidh Newton for assisting with booking the village hall for community engagement events, and for being so supportive throughout the process.

Our final thanks go towards St Hilda's CE Primary School, St Benedict's RC Primary School, and Ampleforth Abbey, for their support and enthusiasm in taking part in the Ampleforth Big Dig along with the rest of the Ampleforth community.





## Executive summary

DigVentures was commissioned by the NYMNPA to undertake an archaeological desk-based assessment of Ampleforth Village, North Yorkshire, as part of the Ampleforth Big Dig project; a deliverable element of the Ryevitalise Landscape Partnership.

The overarching aims and objectives of the project are outlined in the project design (Teale, 2023), with the specific research aims of the desk-based assessment detailed in Section 2 of this report. They are articulated as a series of questions intended to characterise the historic development of the village and investigate the nature of the archaeological resource and heritage assets within the study area. The aims include:

- Defining the nature, extent and significance of the historic environment
- Characterising historical evidence for the development of the village
- Establishing the significance of the known or predicted heritage assets in their wider context
- Identifying areas with potential for surviving archaeology.

The archaeological desk-based assessment incorporated data from a variety of sources, including the North Yorkshire County Council and North York Moors National Park Authority Historic Environment Records, the National Heritage List of England, and the National Library of Scotland Mapping Programme. The archaeological desk-based assessment achieved the defined aims by helping to understand the existing archaeological resource and heritage assets within the region.

The area currently occupied by Ampleforth village and its environs has been subject to human activity since the Neolithic period. A funerary landscape developed just to the north of the village throughout the Bronze Age and into the Iron Age. A number of these heritage assets are scheduled ancient monuments, ascribing them with national significance. The area saw very localised Roman activity and sporadic occupation before records show its initial development into the settlement that exists today began in the Medieval period. The centre of the current village appears to form the nucleus of its Medieval origins, with the 12th century St. Hilda's church and characteristically Medieval land strips, or Burgage plots, visible as divisions on historical mapping. Several Grade I and Grade II listed buildings in the study area can be ascribed with regional and national significance. Post-Medieval and modern map sources show the gradual expansion of the village into the size and character that exists today, with new buildings being added throughout the village with a particular focus towards the south and the east around Ampleforth College. The centre of the village became a conservation area in 1977, highlighting the current and historical regional significance of Ampleforth.

## Table of contents

1	INTRODUCTION AND SCOPE	8
1.1	Project background	8
1.2	Scope of document	8
1.3	Site location	9
2	RESEARCH AIMS AND OBJECTIVES	9
2.2	Aim 1 – To determine the nature, extent and significance of the historic environment	9
2.3	Aim 2 – Characterise historical evidence for the development of the village	9
3	METHODOLOGY	10
3.1	Key resources	10
3.2	Site visit	10
4	ARCHAEOLOGICAL AND HISTORICAL BACKGROUND	10
4.1	Prehistoric (Pre 43AD)	10
4.2	Roman (43AD – 410AD)	11
4.3	Medieval (410AD – 1485AD)	11
4.4	Post-Medieval (1485AD to 18th century)	11
4.5	Modern (19th century to present)	12
5	CARTOGRAPHIC INFORMATION	12
6	LIDAR	13
7	CONSTRAINTS	14
7.1	National Designations	14
8	DISCUSSION	14
8.1	Archaeology and historic development of Ampleforth	14
8.2	Understanding the potential of the historic environment (Aim 1)	15
8.3	The historical evidence for the development of the village (Aim 2)	15
9	BIBLIOGRAPHY	16
	APPENDIX 1 – PREHISTORIC HER FEATURES	17
	APPENDIX 2 – ROMAN HER FEATURES	18
	APPENDIX 3 – MEDIEVAL HER FEATURES	19
	APPENDIX 4 – POST-MEDIEVAL HER FEATURES	19
	APPENDIX 5 – MODERN HER FEATURES	20
	APPENDIX 6 – LISTED BUILDINGS	22
	APPENDIX 7 – SCHEDULED MONUMENTS	24

## List of figures

Figure 1 Site location.....	30
Figure 2 Prehistoric HER entries in and around the Ampleforth study area. ....	31
Figure 3 Prehistoric HER points to the North of the Ampleforth study area. ....	32
Figure 4 Dropping Gill round cairns and square barrow cemetery. ....	33
Figure 5 Prehistoric HER points to the Northeast of the Ampleforth study area.....	34
Figure 6 Prehistoric HER points within the Ampleforth study area. ....	35
Figure 7 Roman HER entries in and around the Ampleforth study area.....	36
Figure 8 Medieval HER entries in the Ampleforth study area. ....	37
Figure 9 Post-Medieval HER entries in the Ampleforth study area.....	38
Figure 10 Post-Medieval HER entries to the North of the Ampleforth study area. ....	39
Figure 11 Modern HER entries in the Ampleforth study area. ....	40
Figure 12 Modern HER entries to the North of the Ampleforth study area. ....	41
Figure 13 1854 Six-inch to the mile first edition Ordnance Survey map, sheet 105. ....	42
Figure 14 1854 Six-inch to the mile map, showing Ampleforth College. ....	43
Figure 15 1854 Six-inch to the mile map, showing area to the North of Ampleforth. ....	44
Figure 16 1892 25-inch to the mile map, sheet CV6; Yorkshire.....	45
Figure 17 1895 Six-inch to the mile map, sheet CV NW; Yorkshire.....	46
Figure 18 1911 25-inch to the mile map, sheet CV6; Yorkshire.....	47
Figure 19 1913 six-inch to the mile map, sheet CV NW. ....	48
Figure 20 1952 Six-inch to the mile map, sheet CV NW.....	49
Figure 21 1958 six-inch to the mile map, sheet SE 57 NE.....	50
Figure 22 LiDAR 1m DTM with Hillshade elevation scale. ....	51
Figure 23 LiDAR 1m DTM with Colour elevation scale and all HER data points. ....	52
Figure 24 Conservation area and Historic England listed buildings. ....	53

## 1 INTRODUCTION AND SCOPE

### 1.1 Project background

1.1.1 DigVentures has been appointed by the North York Moors National Park Authority (NYMNPA, hereafter the Client) to undertake an Archaeological Desk-Based Assessment (DBA) of Ampleforth Village, North Yorkshire (NGR: SE 58299 78732, [Figure 1](#)). The DBA was conducted as part of the Ryevitalise Landscape Partnership Scheme, a project partly funded by the National Lottery Heritage Fund and the Howardian Hills AONB. Led by the NYMNPA, the Ryevitalise Landscape Partnership aims to conserve, protect and interpret the cultural and natural landscape of the River Rye.

1.1.2 As part of the Ryevitalise landscape partnership, the 'Ampleforth Big Dig' community project comprised of a community-led archaeological test pitting event across the village, aiming to discover and piece together the hidden history of early Ampleforth. This community test pitting project engaged the local community and enabled the Ryevitalise Scheme to understand the development of Ampleforth and to better protect its heritage and history. The wider project background, along with an outline of its aims, objectives and methodologies, is available in the project design (Teale, 2023).

### 1.2 Scope of document

1.2.1 This DBA investigates the nature of the archaeological resource and heritage assets within the study area ([Figure 1](#)). It conforms with current best practice and to the guidance outlined in the Chartered Institute for Archaeologists (2017) *Standards and guidance for historic environment desk-based assessment*. The scope of research is based on data gathered from the North Yorkshire County Council and North York Moors National Park Authority's Historic Environment Records (HER), the National Heritage List of England and historic mapping obtained from the National Library of Scotland.

1.2.2 Ampleforth village falls within the North Yorkshire County Council area, a region which does not currently have an archaeological research framework in place. The Yorkshire Resource Assessment (Roskams, S. & Whyman, M., 2005) and Yorkshire Archaeological Research Framework: research agenda (Roskams, S. & Whyman, M., 2007) are relevant and have been consulted as part of this DBA, although they are outdated in part. The document also refers to the NYMNPA's Historic Environment Strategy themes as discussed in Section 4.6 of the Project Design (Teale, 2023).

1.2.3 This document will be submitted to the NYMNPA and circulated amongst the local Ampleforth community participants in advance of the 'Ampleforth Big Dig'. This will provide access to the initial survey of the historic and archaeological background to the village, prior to the test pitting weekend. The document provides a comprehensive background from which the historical narrative of Ampleforth can be developed further by the residents and local community during the dig. It also represents a useful resource from which the test pits themselves can be targeted to identify potential archaeological remains which may reveal more about the history and development of the village.

### 1.3 Site location

- 1.3.1 The village of Ampleforth is located on the southern boundary of the North York Moors National Park and the northern boundary of the Howardian Hills Area of Outstanding Natural Beauty in North Yorkshire (NGR SE 58299 78732; see [Figure 1](#)). The village is located around the east-west aligned minor road East End / West End, to the south of the A170 in the very south-west corner of the North York Moors National Park, approximately 6km to the south-west of Helmsley. The village is surrounded by agricultural land and mixed woodland, and comprises a mixture of residential buildings, farms and local amenities.
- 1.3.2 The underlying bedrock of Ampleforth differs either side of the West End – East End Road which runs directly east-west through the village. To the south of the road, the bedrock is classed as the Jurassic Ampthill Clay Formation and the Kimmeridge Clay Formation, and to the north are bands of mudstones of the Jurassic Oxford Clay Formation interbedded with Jurassic sedimentary bedrock of the Long Nab Member and sandstones of the Jurassic Lower Calcareous Grit Formation and Coralline Oolite Formation [Yorkshire], with ooidal limestones of the Jurassic Malton Oolite Member and Coral Rag Member at the north-eastern end of the village (BGS, 2023). There are no superficial deposits recorded in the centre of the village, but Quaternary Alluvial clays, sands, silts and gravels are recorded alongside sedimentary deposits of the Vale of York Formation in the south-west of the village, with Quaternary Lacustrine deposits in to the south and south-east (BGS, 2023).
- 1.3.3 The soils across Ampleforth are similarly different either side of the West-End East-End road. To the south, they mainly comprise slowly permeable seasonally wet slightly acid but base-rich loamy and clayey soils, and to the north they comprise freely draining slightly acid loamy soils (Soilscapes, 2023).

## 2 RESEARCH AIMS AND OBJECTIVES

- 2.1.1 The archaeological aims and objectives of this DBA are articulated below.

### 2.2 Aim 1 – To determine the nature, extent and significance of the historic environment

- Q1. What is the nature and extent of the known heritage assets that survive within the area of study?
- Q2. What is the significance of the known heritage assets in their wider context?

### 2.3 Aim 2 – Characterise historical evidence for the development of the village

- Q3. Can the nature, extent and significance of known heritage assets within the study area inform the narrative for the historic development of the village?
- Q4. Can research from Q1-3 identify areas of the village where potential surviving archaeology may exist?

## 3 METHODOLOGY

### 3.1 Key resources

3.1.1 All works were compiled in line with the ClfA (2017) *Standard and guidance for historic environment desk-based assessment* and were undertaken in accordance with the standards set out within the project design (Teale, 2023). A brief summary of key resources is given below:

- North Yorkshire County Council Historic Environment Record (NYCC HER)
- North York Moors National Park Authority Historic Environment Record (NYMNP HER)
- National Heritage List of England (NHLE)
- British Geological Survey data
- Yorkshire Archaeological Resource Assessment and Research Framework
- National Library of Scotland (NLS) Historic Mapping
- Research undertaken by Ed Carter and the Ampleforth Historical Society

### 3.2 Site visit

3.2.1 A site visit was conducted on the 19<sup>th</sup> of December 2022 with Kimberley Teale, Programme Manager from the DigVentures project team, Amy Carrick-Knowles, Ryevitalise Education & Engagement Officer, several members of Ampleforth Parish Council, members of Ampleforth Historical Society as well as some local residents.

3.2.2 The site visit involved a walk through Ampleforth, discussing various historical buildings as well as the scope for investigation at several properties along the way. Members of the historical society have undertaken plentiful research into Ampleforth's history and it was agreed that this would be shared to help in the creation of the Desk-Based Assessment. The visit also discussed the scope for involving local schools in the project and the use of the village hall throughout the test pitting project.

## 4 ARCHAEOLOGICAL AND HISTORICAL BACKGROUND

### 4.1 Prehistoric (Pre 43AD)

4.1.1 There are 67 HER entries relating to the prehistoric period in and around the Ampleforth study area encompassing the Neolithic, Bronze Age and Iron Age (Figure 2). Of these entries, the vast majority (61) were observed as earthworks or cropmarks. Additionally, there were three burials, two find spots and one entry as a piece of documentary evidence. There were 48 records entered with either exact or centred co-ordinate locations, whilst 19 were either unknown or approximated. Almost all of the entries are located on the high ground along the top of the valley ridge to the North of Ampleforth village, just beyond the boundary of the study area (Figures 3-6).

4.1.2 The two entries listed as Neolithic were both find spots (MNY1761 and MNY12226). However, no accompanying information exists within the HER describing their nature and their locations are listed as only approximate.

4.1.3 There are 31 listed HER entries attributed to the Bronze Age and two of these are scheduled ancient monuments. These consist of the double dykes on Painters Rigg (HER entry 4172; Historic England list entry 1004175) and Studford Ring (HER entry

4164; Historic England list entry 1004913). Besides these two monuments, the rest of the recorded Bronze Age landscape around the Ampleforth study area appears to be largely funerary in nature, with the majority of entries and listings consisting of barrows, barrow cemeteries and evidence of burials or cremations.

4.1.4 There are 30 listed HER entries attributed to the Iron Age and all of these relate to the scheduled ancient monument of Dropping Gill round cairns and square barrow cemetery (HER entries 54, 4140; Historic England list entry 1004085). The entries indicate the existence of at least 16 square barrows with a number of other potential candidates. However, a number of these may represent duplicate entries and another of these entries (HER 13575) was interpreted in the HER from documentary mapping evidence but its exact location is unknown and may also represent a duplicate.

4.1.5 Four entries were listed as being attributed to the Prehistoric period but could not be further refined in chronology. All of these features were listed as earthworks consisting of a barrow (MNY36887), a ditch (HER entry 4165), a large pit (HER entry 6371) and a field system (HER entry 1841).

## 4.2 Roman (43AD – 410AD)

4.2.1 There were four entries directly attributed to the Roman period (Figure 7) and all were recorded as find spots, two of which (HER entries 592, 10438) contained no further information or descriptions of their nature and could not be exactly located. A third (HER entry 22967), consisted of a bronze plumb bob, statuette and knife handle discovered by a metal detectorist. The final find spot (HER entry 10438) comprises a number of pottery sherds recovered in 1936. The co-ordinate locations for both entries are only approximate.

4.2.2 Nine entries to the HER were recorded as undated earthwork features, interpreted as possibly originating from any time between the Roman and Modern period. These consisted of a number of drainage ditches, trackways and a limestone quarry. No other information could be obtained to refine this further.

## 4.3 Medieval (410AD – 1485AD)

4.3.1 There are four entries directly attributed to the Medieval period in the HER databases (Figure 8). One of these is a documentary reference to the village of 'Ampreforde' in the Domesday book (HER entry 4174). The remaining three are earthwork features consisting of a trackway (HER entry 4176), a Medieval hollow-way and terraces (HER entry 6588) and a Lynchet (HER entry MNY11437). All of these entries have a single co-ordinate point central to the feature itself.

4.3.2 Two other HER entries assume a 12th century origin for St. Hilda's church (MNY1769) and a 13th century origin for a watermill (MNY23748) at Mill Farm. Whilst the exact period of origin remains undetermined, these features almost certainly relate to the Medieval period.

## 4.4 Post-Medieval (1485AD to 18th century)

4.4.1 A total of 20 HER entries were attributed to the Post-Medieval period (Figures 9-10), ranging from the end of the Medieval period to the beginning of the 19th century. Six of these entries were agricultural earthwork features, such as ridge and furrow

ploughing, that could not be refined more than Post-Medieval to 19th century in chronology.

- 4.4.2 Nine entries could only be determined as Post-Medieval in date and consist of features such as lime kilns, quarries, boundary stones, enclosures and hollow-ways. Four entries consist of extant structures surviving within the village itself, including 18th century cottages and a Manor house as well as Ampleforth school. One final entry exists for Ampleforth village as a whole, stated as having origins in the Medieval period but continuing in to the Modern era as the present village.

#### 4.5 Modern (19th century to present)

- 4.5.1 There are 16 HER entries attributed to the Modern period (Figures 11-12), half of which were either exactly located or provided with a centralized co-ordinate reference point and the other half could only be approximately located. Two of these entries represent documentary and historic mapping evidence for a 19th century blacksmith's shop (HER entry 5081) and a windmill (HER entry 7377) in the village. A 19th century limestone quarry (HER entry 19334) was entered as an earthwork feature, whilst the remaining four entries associated with the 19th century relate to extant structures within the village such as cottages and barns.
- 4.5.2 The remaining nine entries all relate to extant 20th century structures or earthwork features attributed to Second World War installations, such as Nissen huts, accommodation blocks and a Home Guard observation post.

## 5 CARTOGRAPHIC INFORMATION

- 5.1.1 The six-inch Ordnance survey of 1854 (published 1856) was the earliest map available for consultation (Figures 13-15). Buildings with thin strips of land are shown extending from the Northern and Southern side of the main East-West road through the village, with more expansive field systems beyond. Named buildings central to the village include the post office, a 'National School,' the White Swan Inn and St. Hilda's church. The 'White Horse Inn' is labelled as a building at the western end of the village, whilst at the eastern end there are a group of buildings labelled as 'Poor Houses.' These could possibly be in reference to a local workhouse, or simply to houses in a poor state of repair.
- 5.1.2 Further to the East of the village, structures and buildings related to Ampleforth College and Ampleforth Lodge are labelled just to the South of the road between Ampleforth and Oswaldkirk (Figure 14). Several Prehistoric monuments are labelled to the North of the village; including Studford Ring, the double dykes at Painters Rigg and numerous 'tumuli' at Dropping Gill (Figure 15). These almost certainly relate to the round cairns and square barrow cemetery known at this location (HER entries 54, 4140; Historic England list entry 1004085).
- 5.1.3 The 25-inch Ordnance survey of 1889-1891 (published in 1892) is the second earliest map available (Figure 16). The layout of the village remains much unchanged, but the map adds some new buildings and features not previously labelled during the 1854 survey. A Smithy, two Methodist chapels, a Vicarage and a second school feature as labelled buildings. To the East at Ampleforth College, more detail is visible relating to the layout of the structures themselves and the map also adds new features including



a cricket ground, three 'Baths' and a Pavilion. The six-inch 1895 Ordnance survey (Figure 17), shows very little change due to the short period of time between the publication of the 1892 and 1895 maps. However, the 1895 map does highlight industrial features to the South of the village, including a brick and tile works as well as a water mill.

- 5.1.4 The next earliest map is the 25-inch 1911 Ordnance survey (Figure 18). This map locates a Roman pottery findspot made in 1875 at a house to the Northern side of the main street. This could relate to one of the HER entries that indicated a findspot of Roman pottery in Ampleforth village (HER entry 10438). Other new additions to the mapping include St. Benedict's Roman Catholic Church built in 1907 and a gas works with tramway to the South of Ampleforth College. Very few changes appear between the 1911 and six inch 1913 Ordnance survey (Figure 19), due to the short time period between the two maps. However, some notable omissions include the watermill identified in the 1895 map, whilst the brick and tile works is now labelled as disused.
- 5.1.5 The six-inch 1952 Ordnance survey (Figure 20) shows the historic centre of the village itself largely unchanged, although numerous unnamed new structures can be observed along the road to the South of St. Hilda's church, along Back Lane to the South of St. Benedict's Roman Catholic Church and along East Lane immediately to the East of the village. Additionally, substantial new additions can be observed to the buildings and structures associated with Ampleforth College. The final map assessed was the six-inch 1958 Ordnance survey (Figure 21). There were no changes of any significance noted between the 1952 and 1958 maps, likely reflecting the short time that had elapsed period between the two.

## 6 LIDAR

- 6.1.1 Environment Agency LiDAR Composite DTM (Digital Terrain Model) raster elevation model at 1m spatial resolution was used to generate a hillshade visualisation for the study area (Figure 22). The hillshade DTM model highlights variation in the topography, whilst the colour elevation visualisation with contour lines highlights changes in elevation relative to sea level (Figure 23). Pertinent landscape features such as water-cut ravines are visible in the high ground to the North of the study area. The most obvious geological feature is the East-West aligned valley and its northern escarpment edge, visible running through the centre of Ampleforth village and the study area.
- 6.1.2 Archaeological features including Studford ring, the double dykes on Painters Rigg and a number of the round cairns and square barrows are also visible to the North of the study area. The distribution of the HER points, including the Prehistoric earthwork features situated on the high ground along the ridge to the North of the village, is highlighted in the colour elevation model with contour lines (Figure 23). Field boundaries and land divisions are visible throughout the entirety of the study area, some of which appear in the characteristically Medieval Burgage plot style, whilst extensive structures and landscape alterations relating to Ampleforth College dominate the Eastern end of the study area. The modern road is also visible running East-West through the village.

## 7 CONSTRAINTS

### 7.1 National Designations

- 7.1.1 The historic centre of Ampleforth village is a Conservation Area and there are 17 Listed Buildings within the study area (Figure 24). Sixteen of these have been assigned Grade II status and there is one Grade I Listed building; the Abbey Church at Ampleforth Abbey (list entry: 1315767). The Grade II listed buildings range in nature from churches, cottages, schools and a bridge. They are predominantly distributed along the East-West main road through the village, with three at Ampleforth Abbey.
- 7.1.2 There are no Scheduled Monuments within the study area itself but there are a number of Prehistoric entries, previously discussed in section 4.1, directly to the north (Figure 25); including the Double Dykes at Painters Rigg (Historic England list entry 1004175), Studford Ring (Historic England list entry 1004913), Dropping Gill Round Cairns (Historic England list entry 1004085) and Pry Rigg Round Barrows (Historic England list entry 1004086). Additionally, the Cistercian monastery of Byland Abbey (Historic England list entry 1013403) lies just to the West of the study area.

## 8 DISCUSSION

### 8.1 Archaeological and historic development of Ampleforth

- 8.1.1 The desk-based assessment has revealed that there was continuous evidence of human activity from the Neolithic through to the modern day. Evidence for Prehistoric activity was prevalent towards the North of the village just outside the Ampleforth study area, with numerous earthwork and landscape features such as dykes, cairns, barrows and enclosure monuments set within a predominantly funerary landscape. Analysis of LiDAR 1m DTM model visualisations show the concentration of such earthworks on the high ground above the village. Roman activity was very limited, with only four finds spots and a limited number of potential ditches and trackways.
- 8.1.2 Evidence for Medieval activity begins with the mention of 'Ampreforde' in the Domesday book and continues through the identification of several key Medieval structures in the village within the HER records; such as St. Hilda's church, Ampleforth Abbey church, the watermill at Mill Farm and a number of trackways, Hollow ways and lynchets. Some of these features also appear on several historic maps of Ampleforth and the surrounding area. Further indicative evidence for Medieval activity includes land strips characteristic with Medieval Burgage plots radiating from either side of the main road through the village, visible in the historic mapping and the LiDAR.
- 8.1.3 There is extensive evidence for human activity in the study area from the Post-Medieval and Modern periods, particularly in the built heritage. The historic centre of the village remains more or less unchanged throughout the map regression but the village does expand in size, particularly to the South, most noticeably between the 1913 and 1952 maps. Of further note is the development of Ampleforth College with additional ancillary buildings and features such as a cricket ground, pavilion and tramway. Additional pieces of World War Two infrastructure such as Nissen huts and accommodation blocks also form part of the more recent built heritage landscape.

## **8.2 Understanding the potential of the historic environment (Aim 1)**

- 8.2.1 Aim 1 was addressed in this report through an assessment of the known heritage assets within the Ampleforth study area as defined by existing HER records, map regression analysis, LiDAR visualisations and an evaluation of listed buildings and scheduled ancient monuments.
- 8.2.2 This assessment identified numerous heritage events relating to the Prehistoric, Roman, medieval, post-medieval and modern periods. Scheduled ancient monuments of national significance relating to the Prehistoric and medieval periods were present just beyond the boundary of the Ampleforth study area but were still considered as relevant to the purposes of this report. Several Grade I and Grade II listed buildings of regional and national significance were observed within the study area, including the Grade I listed Abbey Church at Ampleforth Abbey (list entry: 1315767).
- 8.2.3 Most of the HER entries within the boundary of the study area can be ascribed local or regional significance on the basis of their relevance to the local community of Ampleforth itself, such as local findspots or undated earthwork features. However, the heritage and character of the village is recognized as being of local and regional significance through its preservation as a designated conservation area.

## **8.3 The historical evidence for the development of the village (Aim 2)**

- 8.3.1 The results of Aim 1 have enabled a synthesis of existing knowledge surrounding the known heritage of Ampleforth village, developing a narrative of its development from the Prehistoric through to the present day.
- 8.3.2 The area currently occupied by Ampleforth village and its environs has been subject to human activity since the Neolithic period. A funerary landscape developed just to the North of the village throughout the Bronze Age and into the Iron Age. The area saw very localised Roman activity and sporadic occupation before records show its initial development into the settlement that exists today began in the medieval period. The centre of the current village appears to form the nucleus of its medieval origins, with the 12th century St. Hilda's church and characteristically medieval land strip, or Burgage plot, divisions visible on mapping. Post-medieval and modern map sources show the gradual expansion of the village into the size and character that exists today, with new buildings being added throughout the village but with a particular focus towards the South and the East at Ampleforth College.
- 8.3.3 The assessment and evaluation of the evidence collected as part of this Desk Based Assessment strongly suggests there is very high potential for below-ground archaeological remains to exist in and around the Ampleforth Village study area. Archaeological evidence relating to the medieval, post medieval and modern periods is expected to be the most likely encountered throughout the village as a whole. However, due to the increased density of known Prehistoric activity on the high ground just to the north of the village, there is also a likelihood that residual artefactual evidence relating to the Prehistoric period may be recovered, or even isolated evidence of occupation in some locations. Roman activity is limited throughout the study area, but several known find spots throughout the village cannot rule out the discovery of artefacts or occupation relating to this period.

## 9 BIBLIOGRAPHY

British Geological Survey (BGS). 2023. *Geology Viewer* [https://geologyviewer.bgs.ac.uk/?\\_ga=2.268352526.1074641198.1685618841-2057170601.1685618841](https://geologyviewer.bgs.ac.uk/?_ga=2.268352526.1074641198.1685618841-2057170601.1685618841) [Accessed May 2023]

Carter, Ed. 2023. Ampleforth History presentations 1 - 3 (an amalgamation of research about Ampleforth village gathered from various sources)

Chartered Institute of Archaeologists (CIfA). 2017. *Standard and guidance for historic environment desk-based assessment*. <https://www.archaeologists.net/codes/cifa> [Accessed May 2023].

Historic England. 2023. *National Heritage List of England* <https://historicengland.org.uk/listing/the-list/> [Accessed May 2023]

National Library of Scotland (NLS), 2023. *Map Finder* <https://maps.nls.uk/> [Accessed May 2023]

North York Moors National Park Authority (NYMNP). 2023. *HER Map* <https://www.northyorkmoors.org.uk/discover/archaeology/her-map> [Accessed May 2023]

Roskams, S. and Whyman, M. 2005. *Yorkshire Archaeological Research Framework: Resource Assessment*. <https://historicengland.org.uk/images-books/publications/yorks-arch-res-framework-resource-assessment/> [Accessed May 2023]

Roskams S. and Whyman, M. 2007. *Yorkshire Archaeological Research Framework: Research Agenda*. <https://historicengland.org.uk/images-books/publications/yorks-arch-res-framework-agenda/yorkshire-research-agenda/> [Accessed May 2023]

Soilscapes Viewer, 2023. Cranfield Soil and Agrifood Institute, Cranfield University <https://www.landis.org.uk/soilscapes/> [Accessed May 2023]

Teale, K. 2023. *The Ampleforth Big Dig, Ryevitalise Landscape Partnership; Project Design and Written Scheme of Investigation for a Community Archaeology Project*. DigVentures Report.

## Appendices

### APPENDIX 1 – PREHISTORIC HER FEATURES

PRN	Record Type	Site Summary	Period	Broad Term
54	MONUMENT	Barrow cemetery at Dropping Gill	IRON AGE	EARTHWORK
55	MONUMENT	Bronze Age settlement and funerary landscape on Ampleforth Moor	BRONZE AGE	EARTHWORK
56	MONUMENT	Bronze Age barrow cemetery at Ampleforth Moor	BRONZE AGE	EARTHWORK
1810	MONUMENT	Possible Round Barrow	BRONZE AGE	EARTHWORK
1818	MONUMENT	Dyke to the west of Double Dykes at Painters Rigg	BRONZE AGE	EARTHWORK
1841	MONUMENT	Field system at Painter Rigg	PREHISTORIC	EARTHWORK
3421	MONUMENT	Possible Round Barrow	BRONZE AGE	EARTHWORK
4132	MONUMENT	Round barrow at Dropping Gill	BRONZE AGE	EARTHWORK
4136	MONUMENT	Round barrow at Dropping Gill	BRONZE AGE	EARTHWORK
4137	MONUMENT	Round barrow at Dropping Gill	BRONZE AGE	EARTHWORK
4138	MONUMENT	Round barrow at Dropping Gill	BRONZE AGE	EARTHWORK
4139	MONUMENT	Round barrow at Dropping Gill	BRONZE AGE	EARTHWORK
4140	MONUMENT	Barrow cemetery at Dropping Gill	IRON AGE	EARTHWORK
4141	MONUMENT	Square barrow at Dropping Gill	IRON AGE	EARTHWORK
4142	MONUMENT	Square barrow at Dropping Gill	IRON AGE	EARTHWORK
4143	MONUMENT	Square barrow at Dropping Gill	IRON AGE	EARTHWORK
4144	MONUMENT	Square barrow at Dropping Gill	IRON AGE	EARTHWORK
4145	MONUMENT	Square barrow at Dropping Gill	IRON AGE	EARTHWORK
4146	MONUMENT	Square barrow at Dropping Gill	IRON AGE	EARTHWORK
4147	MONUMENT	Square barrow at Dropping Gill	IRON AGE	EARTHWORK
4148	MONUMENT	Square barrow at Dropping Gill	IRON AGE	EARTHWORK
4149	MONUMENT	Square barrow at Dropping Gill	IRON AGE	EARTHWORK
4150	MONUMENT	Square barrow at Dropping Gill	IRON AGE	EARTHWORK
4151	MONUMENT	Square barrow at Dropping Gill	IRON AGE	EARTHWORK
4152	MONUMENT	Square barrow at Dropping Gill	IRON AGE	EARTHWORK
4153	MONUMENT	Cremation burial Ampleforth Moor	BRONZE AGE	BURIAL
4154	MONUMENT	Ampleforth Moor round barrow 1	BRONZE AGE	EARTHWORK
4155	MONUMENT	Ampleforth Moor round barrow 2	BRONZE AGE	EARTHWORK
4156	MONUMENT	Ampleforth Moor round barrow 3	BRONZE AGE	EARTHWORK
4157	MONUMENT	Ampleforth Moor round barrow 4	BRONZE AGE	EARTHWORK
4158	MONUMENT	Ampleforth Moor round barrow 5	BRONZE AGE	EARTHWORK
4159	MONUMENT	Ampleforth Moor round barrow 6	BRONZE AGE	BURIAL
4160	MONUMENT	Ampleforth Moor round barrow 7	BRONZE AGE	EARTHWORK
4161	MONUMENT	Ampleforth Moor round barrow 8	BRONZE AGE	BURIAL
4162	MONUMENT	Ampleforth Moor round barrow 9	BRONZE AGE	EARTHWORK
4163	MONUMENT	Round barrow north of Studfold Ring	BRONZE AGE	EARTHWORK

4164	MONUMENT	Studford Ring	BRONZE AGE	EARTHWORK
4165	MONUMENT	Ditch east of Studfold Ring	PREHISTORIC	EARTHWORK
4167	MONUMENT	Round barrow north of Glebe Farm at Trudlock Hill	BRONZE AGE	EARTHWORK
4168	MONUMENT	Double Dykes	BRONZE AGE	EARTHWORK
4172	MONUMENT	DOUBLE DIKES	BRONZE AGE	EARTHWORK
6370	MONUMENT	Round barrow at Dropping Gill	BRONZE AGE	EARTHWORK
6371	MONUMENT	Pit at Dropping Gill	PREHISTORIC	EARTHWORK
6372	MONUMENT	Square barrow at Dropping Gill	IRON AGE	EARTHWORK
6373	MONUMENT	Square barrow at Dropping Gill	IRON AGE	EARTHWORK
6374	MONUMENT	Square barrow at Dropping Gill	IRON AGE	EARTHWORK
6375	MONUMENT	Square barrow at Dropping Gill	IRON AGE	EARTHWORK
13574	MONUMENT	Square barrow at Dropping Gill	IRON AGE	EARTHWORK
13575	MONUMENT	Square barrow at Dropping Gill	IRON AGE	DOCUMENTARY EVIDENCE
13576	MONUMENT	Square barrow at Dropping Gill	IRON AGE	EARTHWORK
13577	MONUMENT	Square barrow at Dropping Gill	IRON AGE	EARTHWORK
13578	MONUMENT	Square barrow at Dropping Gill	IRON AGE	EARTHWORK
13579	MONUMENT	Square barrow at Dropping Gill	IRON AGE	EARTHWORK
13580	MONUMENT	Square barrow at Dropping Gill	IRON AGE	EARTHWORK
13581	MONUMENT	Square barrow at Dropping Gill	IRON AGE	EARTHWORK
13582	MONUMENT	Square barrow at Dropping Gill	IRON AGE	EARTHWORK
13583	MONUMENT	Square barrow at Dropping Gill	IRON AGE	EARTHWORK
13584	MONUMENT	Square barrow at Dropping Gill	IRON AGE	EARTHWORK
13585	MONUMENT	Square barrow at Dropping Gill	IRON AGE	EARTHWORK
18868	MONUMENT	Dyke on Painter Rigg	BRONZE AGE	EARTHWORK
19339	MONUMENT	Round barrow at Ampleforth Moor	BRONZE AGE	EARTHWORK
19340	MONUMENT	Round barrow at Ampleforth Moor	BRONZE AGE	EARTHWORK
19341	MONUMENT	Round barrow at Ampleforth Moor	BRONZE AGE	EARTHWORK
MNY12226	FINDSPOT	AMPLEFORTH	NEOLITHIC	FINDSPOT
MNY1741	MONUMENT	Round Barrow	BRONZE AGE	EARTHWORK
MNY1761	FINDSPOT	AMPLEFORTH	NEOLITHIC	FINDSPOT
MNY36887	MONUMENT	Barrow south-west of Ampleforth Abbey	PREHISTORIC	EARTHWORK

## APPENDIX 2 – ROMAN HER FEATURES

PRN	Record Type	Site Summary	Period	Broad Term
592	FINDSPOT	Roman pottery found north of Ampleforth village	ROMAN	FINDSPOT
594	FINDSPOT	Pottery found near Dropping Gill	ROMAN	FINDSPOT
10438	FINDSPOT	Pottery found in Ampleforth Village	ROMAN	FINDSPOT
22967	FINDSPOT	Bronze finds from pasture field west of Ampleforth	ROMAN	FINDSPOT

MNY11611	MONUMENT	Limestone Quarry, Ampleforth	Roman Modern	to	EARTHWORK
MNY4511	MONUMENT	Drainage ditches on Ellis Hill	Roman Modern	to	EARTHWORK
MNY4511	MONUMENT	Drainage ditches on Ellis Hill	Roman Modern	to	EARTHWORK
MNY4511	MONUMENT	Drainage ditches on Ellis Hill	Roman Modern	to	EARTHWORK
MNY4511	MONUMENT	Drainage ditches on Ellis Hill	Roman Modern	to	EARTHWORK
MNY4511	MONUMENT	Drainage ditches on Ellis Hill	Roman Modern	to	EARTHWORK
MNY4513	MONUMENT	Possible ditched trackway north of Ellis Hill	Roman Modern	to	EARTHWORK
MNY4513	MONUMENT	Possible ditched trackway north of Ellis Hill	Roman Modern	to	EARTHWORK
MNY4513	MONUMENT	Possible ditched trackway north of Ellis Hill	Roman Modern	to	EARTHWORK

### APPENDIX 3 – MEDIEVAL HER FEATURES

PRN	Record Type	Site Summary	Period	Broad Term
4174	MONUMENT	Ampleforth village	11th CENTURY SAXON	DOCUMENTARY EVIDENCE
4176	MONUMENT	Trackway at Newstead	MEDIEVAL	EARTHWORK
6588	MONUMENT	Terrace and holloway north of South View Farm Ampleforth	MEDIEVAL	EARTHWORK
MNY11437	MONUMENT	Lynchett south of Ampleforth College	Medieval	EARTHWORK
MNY1769	STRUCTURE	St Hilda's Church, Ampleforth	12th CENTURY to Modern	EXTANT STRUCTURE
MNY23748	STRUCTURE	Mill Farm, Ampleforth	13th CENTURY to Modern	EXTANT STRUCTURE

### APPENDIX 4 – POST-MEDIEVAL HER FEATURES

RN	Record Type	Site Summary	Period	Broad Term
3299	MONUMENT	Hollow way east of Studford Farm	POST MEDIEVAL	EARTHWORK
4166	MONUMENT	Ampleforth Beacon north of Ampleforth village	POST MEDIEVAL	DOCUMENTARY EVIDENCE
7449	MONUMENT	Lime kiln north east of Beacon House	POST MEDIEVAL	EARTHWORK
7450	MONUMENT	Lime kilns south east of Beacon House	POST MEDIEVAL	DOCUMENTARY EVIDENCE
13596	MONUMENT	Hollow way at Dropping Gill	POST MEDIEVAL	EARTHWORK



15358	STRUCTURE	Stable Cottage, East End, Ampleforth	18th CENTURY	EXTANT STRUCTURE
15360	STRUCTURE	The Manor House, East End, Ampleforth	18th CENTURY	EXTANT STRUCTURE
19332	MONUMENT	Limestone quarry south east of Beacon House	POST MEDIEVAL	EARTHWORK
19337	MONUMENT	Boundary stone on the parish boundary between Ampleforth and Sproxton	POST MEDIEVAL	DOCUMENTARY EVIDENCE
19338	MONUMENT	House north of Ampleforth village	POST MEDIEVAL	EARTHWORK
23268	MONUMENT	Enclosure appearing to encircle Studford Ring	POST MEDIEVAL	EARTHWORK
MNY11431	MONUMENT	WATER GATE	Medieval to 19th Century	EARTHWORK
MNY11610	MONUMENT	SPRING COTTAGE	Medieval to 19th Century	EARTHWORK
MNY12866	MONUMENT	Ridge And Furrow, Ampleforth	Medieval to 19th Century	EARTHWORK
MNY12868	MONUMENT	Ridge and furrow south of Mill Lane	Medieval to 19th Century	EARTHWORK
MNY1764	MONUMENT	AMPLEFORTH	Medieval to Modern	EXTANT STRUCTURE
MNY1766	MONUMENT	AMPLEFORTH	Medieval to 19th Century	EARTHWORK
MNY1767	MONUMENT	Ridge and furrow south of Back Lane, Ampleforth	Medieval to 19th Century	EARTHWORK
MNY1768	MONUMENT	AMPLEFORTH SCHOOL	Medieval to Modern	EXTANT STRUCTURE
MNY40505	STRUCTURE	The Manor House	18th Century to 19th Century	EXTANT STRUCTURE

## APPENDIX 5 – MODERN HER FEATURES

PRN	RecordType	Site Summary	Period	Broad Term
5081	MONUMENT	Blacksmith shop in Ampleforth village	19th CENTURY	DOCUMENTARY EVIDENCE
7377	MONUMENT	Windmill north east of Ampleforth village	19th CENTURY	DOCUMENTARY EVIDENCE
19334	MONUMENT	Limestone quarry north of Ampleforth village	19th CENTURY	EARTHWORK
19335	MONUMENT	Burial ground north of Ampleforth village	19th CENTURY	EXTANT STRUCTURE
15359	STRUCTURE	The Cottage, West End, Ampleforth	19th CENTURY	EXTANT STRUCTURE
15361	STRUCTURE	The Owlet, West End, Ampleforth	19th CENTURY	EXTANT STRUCTURE



23314	STRUCTURE	Field barn near Ampleforth village	19th CENTURY	EXTANT STRUCTURE
18479	STRUCTURE	Pry Rigg Army Camp	SECOND WORLD WAR	EXTANT STRUCTURE
18480	STRUCTURE	Storage tank piers at Pry Rigg Camp	SECOND WORLD WAR	EXTANT STRUCTURE
18481	STRUCTURE	Accommodation hut at Pry Rigg Camp	SECOND WORLD WAR	EXTANT STRUCTURE
18482	STRUCTURE	Nissen Hut at Pry Rigg Camp	SECOND WORLD WAR	EXTANT STRUCTURE
18483	STRUCTURE	Loading ramp at Pry Rigg Camp	SECOND WORLD WAR	EXTANT STRUCTURE
18484	STRUCTURE	Accommodation hut at Pry Rigg Camp	SECOND WORLD WAR	EXTANT STRUCTURE
18485	STRUCTURE	Accommodation hut at Pry Rigg Camp	SECOND WORLD WAR	EXTANT STRUCTURE
18486	STRUCTURE	Road at Pry Rigg Camp	SECOND WORLD WAR	EXTANT STRUCTURE
18542	STRUCTURE	Home Guard observation post on the road to Priest Barn Farm Ampleforth	SECOND WORLD WAR	DOCUMENTARY EVIDENCE
MNY12867	MONUMENT	AMPLEFORTH	Unknown	EARTHWORK

## APPENDIX 6 – LISTED BUILDINGS

List No.	Name	Location	Grade	List Date	Amend Date	Hyperlink
1149568	ASH LING	Ampleforth, Ryedale, North Yorkshire, YO62	II	11/12/1985		<a href="https://historicengland.org.uk/listing/the-list/list-entry/1149568">https://historicengland.org.uk/listing/the-list/list-entry/1149568</a>
1149569	CROSS HOUSE	Ampleforth, Ryedale, North Yorkshire, YO62	II	11/12/1985		<a href="https://historicengland.org.uk/listing/the-list/list-entry/1149569">https://historicengland.org.uk/listing/the-list/list-entry/1149569</a>
1149570	FORD END HOUSE	Ampleforth, Ryedale, North Yorkshire, YO62	II	11/12/1985		<a href="https://historicengland.org.uk/listing/the-list/list-entry/1149570">https://historicengland.org.uk/listing/the-list/list-entry/1149570</a>
1149571	FERN VILLA	Ampleforth, Ryedale, North Yorkshire, YO62	II	11/12/1985		<a href="https://historicengland.org.uk/listing/the-list/list-entry/1149571">https://historicengland.org.uk/listing/the-list/list-entry/1149571</a>
1149572	THE OWLET	Ampleforth, Ryedale, North Yorkshire, YO62	II	11/12/1985		<a href="https://historicengland.org.uk/listing/the-list/list-entry/1149572">https://historicengland.org.uk/listing/the-list/list-entry/1149572</a>
1149573	THE COTTAGE	Ampleforth, Ryedale, North Yorkshire, YO62	II	11/12/1985		<a href="https://historicengland.org.uk/listing/the-list/list-entry/1149573">https://historicengland.org.uk/listing/the-list/list-entry/1149573</a>
1149605	BRIDGE FROM ABBEY PRECINCT ACROSS ROAD TO AMPLEFORTH BANK	Ampleforth, Ryedale, North Yorkshire, YO62	II	09/09/1985		<a href="https://historicengland.org.uk/listing/the-list/list-entry/1149605">https://historicengland.org.uk/listing/the-list/list-entry/1149605</a>
1149606	NUMBER 1 FOXGLOVE COTTAGES	Ampleforth, Ryedale, North Yorkshire, YO62	II	11/12/1985		<a href="https://historicengland.org.uk/listing/the-list/list-entry/1149606">https://historicengland.org.uk/listing/the-list/list-entry/1149606</a>
1149607	STABLE COTTAGE	Ampleforth, Ryedale, North Yorkshire, YO62	II	11/12/1985		<a href="https://historicengland.org.uk/listing/the-list/list-entry/1149607">https://historicengland.org.uk/listing/the-list/list-entry/1149607</a>
1149608	WATERGATE FARMHOUSE	Ampleforth, Ryedale, North Yorkshire, YO62	II	11/12/1985		<a href="https://historicengland.org.uk/listing/the-list/list-entry/1149608">https://historicengland.org.uk/listing/the-list/list-entry/1149608</a>
1149609	CHURCH OF SAINT HILDA	Ampleforth, Ryedale, North Yorkshire, YO62	II	04/01/1955		<a href="https://historicengland.org.uk/listing/the-list/list-entry/1149609">https://historicengland.org.uk/listing/the-list/list-entry/1149609</a>

1172975	MARIAN HOUSE	Ampleforth, Ryedale, North Yorkshire, YO62	II	11/12/1985		<a href="https://historicengland.org.uk/listing/the-list/list-entry/1172975">https://historicengland.org.uk/listing/the-list/list-entry/1172975</a>
1315767	The Abbey Church	Ampleforth, Ryedale, North Yorkshire, YO62	I	09/09/1985	02/03/2016	<a href="https://historicengland.org.uk/listing/the-list/list-entry/1315767">https://historicengland.org.uk/listing/the-list/list-entry/1315767</a>
1315768	THE STUDY BLOCK	Ampleforth, Ryedale, North Yorkshire, YO62	II	04/01/1955	12/12/1985	<a href="https://historicengland.org.uk/listing/the-list/list-entry/1315768">https://historicengland.org.uk/listing/the-list/list-entry/1315768</a>
1315769	DALESIDE	Ampleforth, Ryedale, North Yorkshire, YO62	II	11/12/1985		<a href="https://historicengland.org.uk/listing/the-list/list-entry/1315769">https://historicengland.org.uk/listing/the-list/list-entry/1315769</a>
1315770	THE MANOR HOUSE	Ampleforth, Ryedale, North Yorkshire, YO62	II	11/12/1985		<a href="https://historicengland.org.uk/listing/the-list/list-entry/1315770">https://historicengland.org.uk/listing/the-list/list-entry/1315770</a>
1315771	MAYNARDS	Ampleforth, Ryedale, North Yorkshire, YO62	II	11/12/1985		<a href="https://historicengland.org.uk/listing/the-list/list-entry/1315771">https://historicengland.org.uk/listing/the-list/list-entry/1315771</a>

## APPENDIX 7 – SCHEDULED MONUMENTS

List Entry	Name	Scheduled Date	Amend Date	Hyperlink
1003144	Byland Moor round cairns			<a href="https://historicengland.org.uk/listing/the-list/list-entry/1003144">https://historicengland.org.uk/listing/the-list/list-entry/1003144</a>
1004049	Prehistoric enclosure			<a href="https://historicengland.org.uk/listing/the-list/list-entry/1004049">https://historicengland.org.uk/listing/the-list/list-entry/1004049</a>
1004085	Dropping Gill round cairns			<a href="https://historicengland.org.uk/listing/the-list/list-entry/1004085">https://historicengland.org.uk/listing/the-list/list-entry/1004085</a>
1004086	Pry Rigg round barrows			<a href="https://historicengland.org.uk/listing/the-list/list-entry/1004086">https://historicengland.org.uk/listing/the-list/list-entry/1004086</a>
1004087	Long Grain round barrows			<a href="https://historicengland.org.uk/listing/the-list/list-entry/1004087">https://historicengland.org.uk/listing/the-list/list-entry/1004087</a>
1004175	Double dykes on Painter Rigg			<a href="https://historicengland.org.uk/listing/the-list/list-entry/1004175">https://historicengland.org.uk/listing/the-list/list-entry/1004175</a>
1004902	Helmsley Bridge			<a href="https://historicengland.org.uk/listing/the-list/list-entry/1004902">https://historicengland.org.uk/listing/the-list/list-entry/1004902</a>
1004913	Studford Ring			<a href="https://historicengland.org.uk/listing/the-list/list-entry/1004913">https://historicengland.org.uk/listing/the-list/list-entry/1004913</a>
1013593	Round barrow 250m north of Coney Hill Farm	09/11/1995		<a href="https://historicengland.org.uk/listing/the-list/list-entry/1013593">https://historicengland.org.uk/listing/the-list/list-entry/1013593</a>
1013594	Round barrow 150m north of Wombwell Arms	14/03/1952	31/01/1996	<a href="https://historicengland.org.uk/listing/the-list/list-entry/1013594">https://historicengland.org.uk/listing/the-list/list-entry/1013594</a>
1013595	Two round barrows 200m NNE of Wombwell Arms	14/03/1952	31/01/1996	<a href="https://historicengland.org.uk/listing/the-list/list-entry/1013595">https://historicengland.org.uk/listing/the-list/list-entry/1013595</a>
1013596	Round barrow 50m east of Windyridge Farm	14/03/1952	01/02/1996	<a href="https://historicengland.org.uk/listing/the-list/list-entry/1013596">https://historicengland.org.uk/listing/the-list/list-entry/1013596</a>
1013597	Round barrow 50m south east of Windyridge Farm	14/03/1952	01/02/1996	<a href="https://historicengland.org.uk/listing/the-list/list-entry/1013597">https://historicengland.org.uk/listing/the-list/list-entry/1013597</a>
1013598	Round barrow 560m NNW of Maidensworth Farm	20/01/1967	22/11/1995	<a href="https://historicengland.org.uk/listing/the-list/list-entry/1013598">https://historicengland.org.uk/listing/the-list/list-entry/1013598</a>
1013599	Round barrow 530m NNW of Maidensworth Farm	20/01/1967	22/11/1995	<a href="https://historicengland.org.uk/listing/the-list/list-entry/1013599">https://historicengland.org.uk/listing/the-list/list-entry/1013599</a>
1013600	Round barrow 300m east of Warren House	20/01/1967	22/11/1995	<a href="https://historicengland.org.uk/listing/the-list/list-entry/1013600">https://historicengland.org.uk/listing/the-list/list-entry/1013600</a>
1013601	Round barrow 150m south of Warren House	07/11/1995		<a href="https://historicengland.org.uk/listing/the-list/list-entry/1013601">https://historicengland.org.uk/listing/the-list/list-entry/1013601</a>
1013602	Round barrow 300m west of Quarry House	07/11/1995		<a href="https://historicengland.org.uk/listing/the-list/list-entry/1013602">https://historicengland.org.uk/listing/the-list/list-entry/1013602</a>

1013603	Long barrow 350m north west of Grimston Grange	29/02/1952	06/11/1995	<a href="https://historicengland.org.uk/listing/the-list/list-entry/1013603">https://historicengland.org.uk/listing/the-list/list-entry/1013603</a>
1009963	Helmsley Castle: twelfth century ringwork, twelfth to fourteenth century enclosure castle and sixteenth century mansion	08/02/1915	11/03/1992	<a href="https://historicengland.org.uk/listing/the-list/list-entry/1009963">https://historicengland.org.uk/listing/the-list/list-entry/1009963</a>
1010343	Round barrow 650m east of South Woods	05/02/1962	20/10/1994	<a href="https://historicengland.org.uk/listing/the-list/list-entry/1010343">https://historicengland.org.uk/listing/the-list/list-entry/1010343</a>
1010344	Round barrow 450m north west of Garbutt Farm	30/06/1969	18/10/1994	<a href="https://historicengland.org.uk/listing/the-list/list-entry/1010344">https://historicengland.org.uk/listing/the-list/list-entry/1010344</a>
1010345	Pit alignment forming part of the Cleave Dyke system 1000m north west of Dialstone Farm	10/11/1994		<a href="https://historicengland.org.uk/listing/the-list/list-entry/1010345">https://historicengland.org.uk/listing/the-list/list-entry/1010345</a>
1010348	Wayside cross known as Cooper Cross on Sutton Bank	10/11/1994		<a href="https://historicengland.org.uk/listing/the-list/list-entry/1010348">https://historicengland.org.uk/listing/the-list/list-entry/1010348</a>
1011365	Beadlam minor Romano-British villa	11/11/1969	05/08/1993	<a href="https://historicengland.org.uk/listing/the-list/list-entry/1011365">https://historicengland.org.uk/listing/the-list/list-entry/1011365</a>
1011969	Cross in churchyard of the Church of the Holy Cross	14/06/1995		<a href="https://historicengland.org.uk/listing/the-list/list-entry/1011969">https://historicengland.org.uk/listing/the-list/list-entry/1011969</a>
1012065	Rievaulx Abbey Cistercian monastery: inner and outer precinct, water-management works, agricultural features, enclosures and ancillary buildings	08/02/1915	04/06/1992	<a href="https://historicengland.org.uk/listing/the-list/list-entry/1012065">https://historicengland.org.uk/listing/the-list/list-entry/1012065</a>
1012742	Round barrow in Cliff Plantation	16/07/1969	22/11/1995	<a href="https://historicengland.org.uk/listing/the-list/list-entry/1012742">https://historicengland.org.uk/listing/the-list/list-entry/1012742</a>
1012743	Section of the Cleave Dyke system, known as the Casten Dike, 300m ENE of Hambleton Inn	07/11/1995		<a href="https://historicengland.org.uk/listing/the-list/list-entry/1012743">https://historicengland.org.uk/listing/the-list/list-entry/1012743</a>
1012744	Round barrow 230m east of Sutton Bank Farm	07/11/1995		<a href="https://historicengland.org.uk/listing/the-list/list-entry/1012744">https://historicengland.org.uk/listing/the-list/list-entry/1012744</a>
1012745	Section of the Cleave Dyke system 45m east of the visitors' centre at Sutton Bank	07/11/1995		<a href="https://historicengland.org.uk/listing/the-list/list-entry/1012745">https://historicengland.org.uk/listing/the-list/list-entry/1012745</a>
1012889	Wayside cross base on south side of the churchyard wall at Scawton	19/10/1995		<a href="https://historicengland.org.uk/listing/the-list/list-entry/1012889">https://historicengland.org.uk/listing/the-list/list-entry/1012889</a>
1012890	Griff Cross, wayside cross 800m NNE of Griff Farm on the road from Helmsley to Rievaulx	03/08/1995		<a href="https://historicengland.org.uk/listing/the-list/list-entry/1012890">https://historicengland.org.uk/listing/the-list/list-entry/1012890</a>

1012992	Two sections of the Cleave Dyke system, one known as the Casten Dike, and a round barrow south of Kilburn Moor Plantation	16/07/1969	03/08/1995	<a href="https://historicengland.org.uk/listing/the-list/list-entry/1012992">https://historicengland.org.uk/listing/the-list/list-entry/1012992</a>
1012993	Section of the Cleave Dyke system 200m south east of Yorkshire Gliding Club	03/08/1995		<a href="https://historicengland.org.uk/listing/the-list/list-entry/1012993">https://historicengland.org.uk/listing/the-list/list-entry/1012993</a>
1013403	Byland Abbey Cistercian monastery: monastic precinct, water-management earthworks, enclosures, ancillary buildings and quarries	20/07/1992		<a href="https://historicengland.org.uk/listing/the-list/list-entry/1013403">https://historicengland.org.uk/listing/the-list/list-entry/1013403</a>
1013436	Round barrow 500m WNW of Pond Head Farm	24/05/1951	23/08/1995	<a href="https://historicengland.org.uk/listing/the-list/list-entry/1013436">https://historicengland.org.uk/listing/the-list/list-entry/1013436</a>
1013437	Round barrow 350m north west of Pond Head Farm	24/05/1951	23/08/1995	<a href="https://historicengland.org.uk/listing/the-list/list-entry/1013437">https://historicengland.org.uk/listing/the-list/list-entry/1013437</a>
1013438	Section of cross ridge dyke and earthworks in Roman Plantation, Oulston Moor	24/05/1951	23/08/1995	<a href="https://historicengland.org.uk/listing/the-list/list-entry/1013438">https://historicengland.org.uk/listing/the-list/list-entry/1013438</a>
1013439	Section of cross ridge dyke and hollow way 200m north west of Pond Head Farm	24/05/1951	23/08/1995	<a href="https://historicengland.org.uk/listing/the-list/list-entry/1013439">https://historicengland.org.uk/listing/the-list/list-entry/1013439</a>
1013440	Round barrow on Grimston Moor 600m north east of Grimston Grange	30/08/1962	31/07/1995	<a href="https://historicengland.org.uk/listing/the-list/list-entry/1013440">https://historicengland.org.uk/listing/the-list/list-entry/1013440</a>
1013441	Round barrow on Grimston Moor 230m north east of Black Gill Plantation	30/08/1962	31/07/1995	<a href="https://historicengland.org.uk/listing/the-list/list-entry/1013441">https://historicengland.org.uk/listing/the-list/list-entry/1013441</a>
1013442	Round barrow on Grimston Moor 655m north east of Grimston Grange	30/08/1962	31/07/1995	<a href="https://historicengland.org.uk/listing/the-list/list-entry/1013442">https://historicengland.org.uk/listing/the-list/list-entry/1013442</a>
1013443	Round barrow on Grimston Moor 750m south west of Viewly Hill Farm	12/09/1995		<a href="https://historicengland.org.uk/listing/the-list/list-entry/1013443">https://historicengland.org.uk/listing/the-list/list-entry/1013443</a>
1013444	Round barrow on Grimston Moor 350m north east of Black Gill Plantation	19/01/1967	21/08/1995	<a href="https://historicengland.org.uk/listing/the-list/list-entry/1013444">https://historicengland.org.uk/listing/the-list/list-entry/1013444</a>
1013445	Two round barrows on Yearsley Moor 260m SSE of High Lions' Lodge	24/05/1951	29/08/1995	<a href="https://historicengland.org.uk/listing/the-list/list-entry/1013445">https://historicengland.org.uk/listing/the-list/list-entry/1013445</a>

1013446	Four round barrows on Yearsley Moor 200m south west of High Lions' Lodge	24/05/1951	29/08/1995	<a href="https://historicengland.org.uk/listing/the-list/list-entry/1013446">https://historicengland.org.uk/listing/the-list/list-entry/1013446</a>
1013447	Round barrow on Yearsley Moor 400m south west of High Lions' Lodge	24/05/1951	29/08/1995	<a href="https://historicengland.org.uk/listing/the-list/list-entry/1013447">https://historicengland.org.uk/listing/the-list/list-entry/1013447</a>
1013448	Round barrow on Yearsley Moor 330m SSW of High Lions' Lodge	04/05/1962	29/08/1995	<a href="https://historicengland.org.uk/listing/the-list/list-entry/1013448">https://historicengland.org.uk/listing/the-list/list-entry/1013448</a>
1013449	Two round barrows on Yearsley Moor 550m south west of High Lions' Lodge	24/05/1951	29/08/1995	<a href="https://historicengland.org.uk/listing/the-list/list-entry/1013449">https://historicengland.org.uk/listing/the-list/list-entry/1013449</a>
1013450	Round barrow on Yearsley Moor 230m SSE of High Lions' Lodge	23/08/1995		<a href="https://historicengland.org.uk/listing/the-list/list-entry/1013450">https://historicengland.org.uk/listing/the-list/list-entry/1013450</a>
1013548	Round barrow 170m north of Wool Knoll	19/01/1967	08/12/1995	<a href="https://historicengland.org.uk/listing/the-list/list-entry/1013548">https://historicengland.org.uk/listing/the-list/list-entry/1013548</a>
1013549	Round barrow 545m NNW of Wool Knoll	19/01/1967	08/12/1995	<a href="https://historicengland.org.uk/listing/the-list/list-entry/1013549">https://historicengland.org.uk/listing/the-list/list-entry/1013549</a>
1013550	Round barrow 550m NNW of Wool Knoll	19/01/1967	08/12/1995	<a href="https://historicengland.org.uk/listing/the-list/list-entry/1013550">https://historicengland.org.uk/listing/the-list/list-entry/1013550</a>
1013551	Round barrow 530m north of Wool Knoll	19/01/1967	08/12/1995	<a href="https://historicengland.org.uk/listing/the-list/list-entry/1013551">https://historicengland.org.uk/listing/the-list/list-entry/1013551</a>
1013552	Round barrow 250m west of Calf Close Wood	05/12/1995		<a href="https://historicengland.org.uk/listing/the-list/list-entry/1013552">https://historicengland.org.uk/listing/the-list/list-entry/1013552</a>
1013553	Round barrow 400m ESE of Theaker Waster's Spring	05/12/1995		<a href="https://historicengland.org.uk/listing/the-list/list-entry/1013553">https://historicengland.org.uk/listing/the-list/list-entry/1013553</a>
1014081	Round barrow 800m east of Windyridge Farm	13/02/1952	22/11/1995	<a href="https://historicengland.org.uk/listing/the-list/list-entry/1014081">https://historicengland.org.uk/listing/the-list/list-entry/1014081</a>
1014082	Round barrow 450m south west of Coney Hill Farm	13/02/1952	22/11/1995	<a href="https://historicengland.org.uk/listing/the-list/list-entry/1014082">https://historicengland.org.uk/listing/the-list/list-entry/1014082</a>
1014083	Round barrow 500m SSW of Coney Hill Farm	13/02/1952	22/11/1995	<a href="https://historicengland.org.uk/listing/the-list/list-entry/1014083">https://historicengland.org.uk/listing/the-list/list-entry/1014083</a>
1014564	Round barrow 480m east of Yorkshire Gliding Club	29/08/1969	13/05/1996	<a href="https://historicengland.org.uk/listing/the-list/list-entry/1014564">https://historicengland.org.uk/listing/the-list/list-entry/1014564</a>
1015491	Moated site and ridge and furrow cultivation 230m south east of Manor Farm	02/01/1997		<a href="https://historicengland.org.uk/listing/the-list/list-entry/1015491">https://historicengland.org.uk/listing/the-list/list-entry/1015491</a>
1015502	Roulston Scar Iron Age promontory fort	03/07/1997	24/01/2023	<a href="https://historicengland.org.uk/listing/the-list/list-entry/1015502">https://historicengland.org.uk/listing/the-list/list-entry/1015502</a>
1018550	Round barrow 600m north west of Garbutt Farm	21/02/1995	02/12/1998	<a href="https://historicengland.org.uk/listing/the-list/list-entry/1018550">https://historicengland.org.uk/listing/the-list/list-entry/1018550</a>

1019335	Round barrow on Scawton Moor, 700m ENE of High Lodge	24/05/1951	10/10/2000	<a href="https://historicengland.org.uk/listing/the-list/list-entry/1019335">https://historicengland.org.uk/listing/the-list/list-entry/1019335</a>
1019336	Round barrow on Sproxton Moor, 410m north of Tom Smith's Cross	24/05/1951	10/10/2000	<a href="https://historicengland.org.uk/listing/the-list/list-entry/1019336">https://historicengland.org.uk/listing/the-list/list-entry/1019336</a>
1019337	Square barrow on Scawton Moor, adjacent to the quarry between Snip Gill Slack and Sword Rigg Slack	24/05/1951	10/10/2000	<a href="https://historicengland.org.uk/listing/the-list/list-entry/1019337">https://historicengland.org.uk/listing/the-list/list-entry/1019337</a>
1019339	Dyke at the north eastern end of Stone Bridge Howl, 760m north west of Court House Farm	06/10/2000		<a href="https://historicengland.org.uk/listing/the-list/list-entry/1019339">https://historicengland.org.uk/listing/the-list/list-entry/1019339</a>
1019341	Pockley Gates round barrow 600m west of Beadlam Grange	19/12/1972	06/10/2000	<a href="https://historicengland.org.uk/listing/the-list/list-entry/1019341">https://historicengland.org.uk/listing/the-list/list-entry/1019341</a>
1019344	Griff medieval settlement and Cistercian monastic grange, 400m west of Griff Farm	16/01/1959	07/07/2000	<a href="https://historicengland.org.uk/listing/the-list/list-entry/1019344">https://historicengland.org.uk/listing/the-list/list-entry/1019344</a>
1019345	Three round barrows 800m ENE of Helmsley Bridge	29/10/1968	06/10/2000	<a href="https://historicengland.org.uk/listing/the-list/list-entry/1019345">https://historicengland.org.uk/listing/the-list/list-entry/1019345</a>
1019346	Linear dyke known as Double Dikes, in Waterloo Plantation	22/01/1969	06/10/2000	<a href="https://historicengland.org.uk/listing/the-list/list-entry/1019346">https://historicengland.org.uk/listing/the-list/list-entry/1019346</a>
1019347	Round barrow 810m NNE of Waterloo Farm, the northernmost of three round barrows in Far Moor Plantation	24/05/1951	10/10/2000	<a href="https://historicengland.org.uk/listing/the-list/list-entry/1019347">https://historicengland.org.uk/listing/the-list/list-entry/1019347</a>
1019348	Round barrow 780m NNE of Waterloo Farm, the easternmost of three round barrows in Far Moor Plantation	24/05/1951	10/10/2000	<a href="https://historicengland.org.uk/listing/the-list/list-entry/1019348">https://historicengland.org.uk/listing/the-list/list-entry/1019348</a>
1019349	Round barrow 710m NNE of Waterloo Farm, the southernmost of three round barrows in Far Moor Plantation	24/05/1951	10/10/2000	<a href="https://historicengland.org.uk/listing/the-list/list-entry/1019349">https://historicengland.org.uk/listing/the-list/list-entry/1019349</a>
1019350	Round barrow on Scawton Moor, 480m north east of High Lodge	24/05/1951	10/10/2000	<a href="https://historicengland.org.uk/listing/the-list/list-entry/1019350">https://historicengland.org.uk/listing/the-list/list-entry/1019350</a>



1019351	Round barrow on Scawton Moor, 390m north east of High Lodge	24/05/1951	10/10/2000	<a href="https://historicengland.org.uk/listing/the-list/list-entry/1019351">https://historicengland.org.uk/listing/the-list/list-entry/1019351</a>
1019515	Round barrow 60m north east of Riccal Bridge	05/01/2001		<a href="https://historicengland.org.uk/listing/the-list/list-entry/1019515">https://historicengland.org.uk/listing/the-list/list-entry/1019515</a>
1019595	Round barrow 420m north of Rye House Farm	17/01/1969	09/02/2001	<a href="https://historicengland.org.uk/listing/the-list/list-entry/1019595">https://historicengland.org.uk/listing/the-list/list-entry/1019595</a>
1019596	Round barrow 300m north of Rye House Farm	17/01/1969	09/02/2001	<a href="https://historicengland.org.uk/listing/the-list/list-entry/1019596">https://historicengland.org.uk/listing/the-list/list-entry/1019596</a>
1019824	Round barrow on Scawton Moor, 620m north west of High Lodge	03/11/1951	10/10/2000	<a href="https://historicengland.org.uk/listing/the-list/list-entry/1019824">https://historicengland.org.uk/listing/the-list/list-entry/1019824</a>
1020105	Section of Cleave Dyke prehistoric boundary on Hambleton Down and World War II bombing decoy shelters north east and north of Garbutt Farm	22/12/1994	20/07/2001	<a href="https://historicengland.org.uk/listing/the-list/list-entry/1020105">https://historicengland.org.uk/listing/the-list/list-entry/1020105</a>
1020313	Medieval lordly residence immediately west of Church Farm	20/07/2001		<a href="https://historicengland.org.uk/listing/the-list/list-entry/1020313">https://historicengland.org.uk/listing/the-list/list-entry/1020313</a>

## APPENDIX 8 – CONSERVATION AREA

UNIQUE ID	NAME	DESIGNATED	AMENDED
3780	Ampleforth	1977	N/A





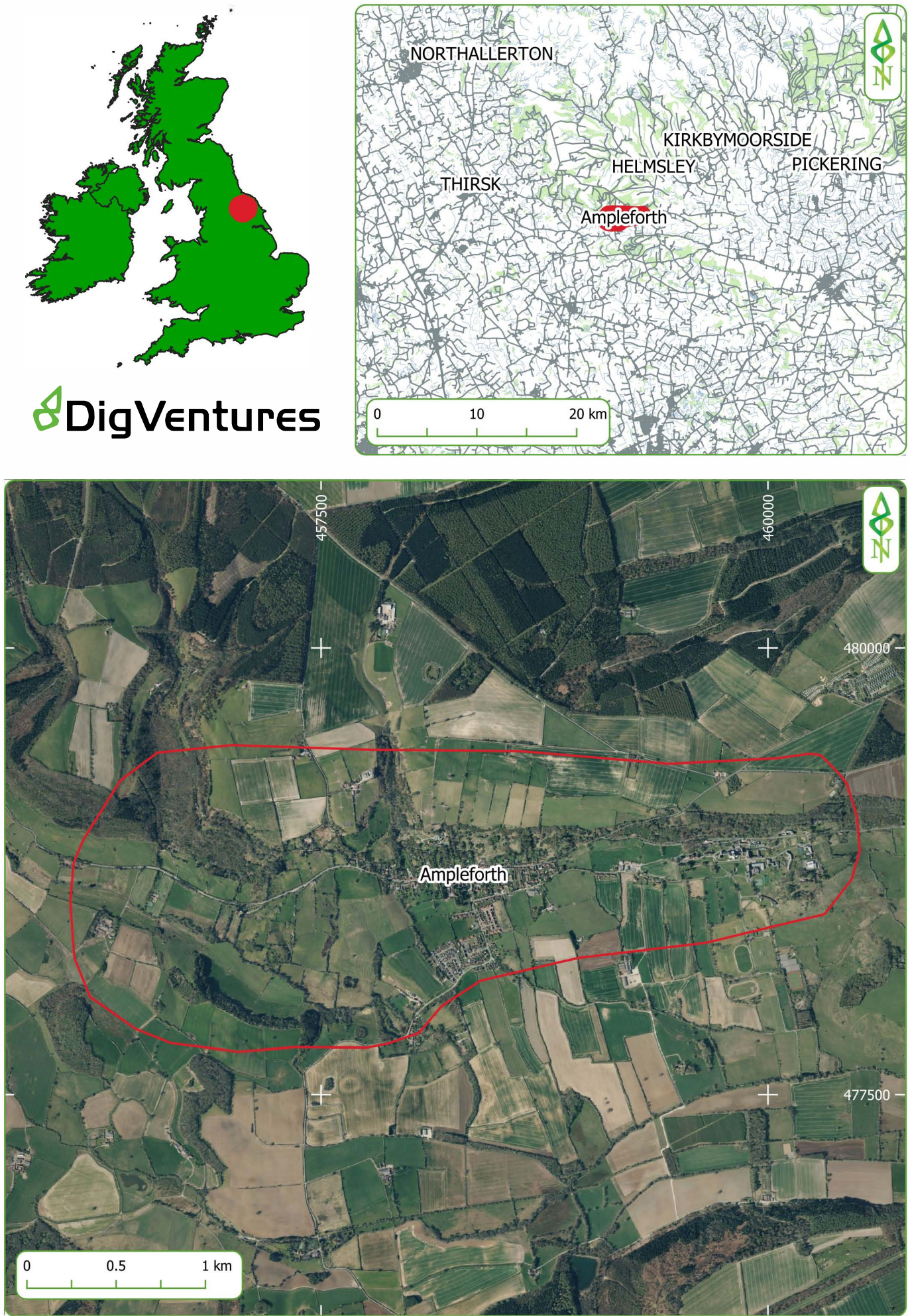


Figure 1. Site location



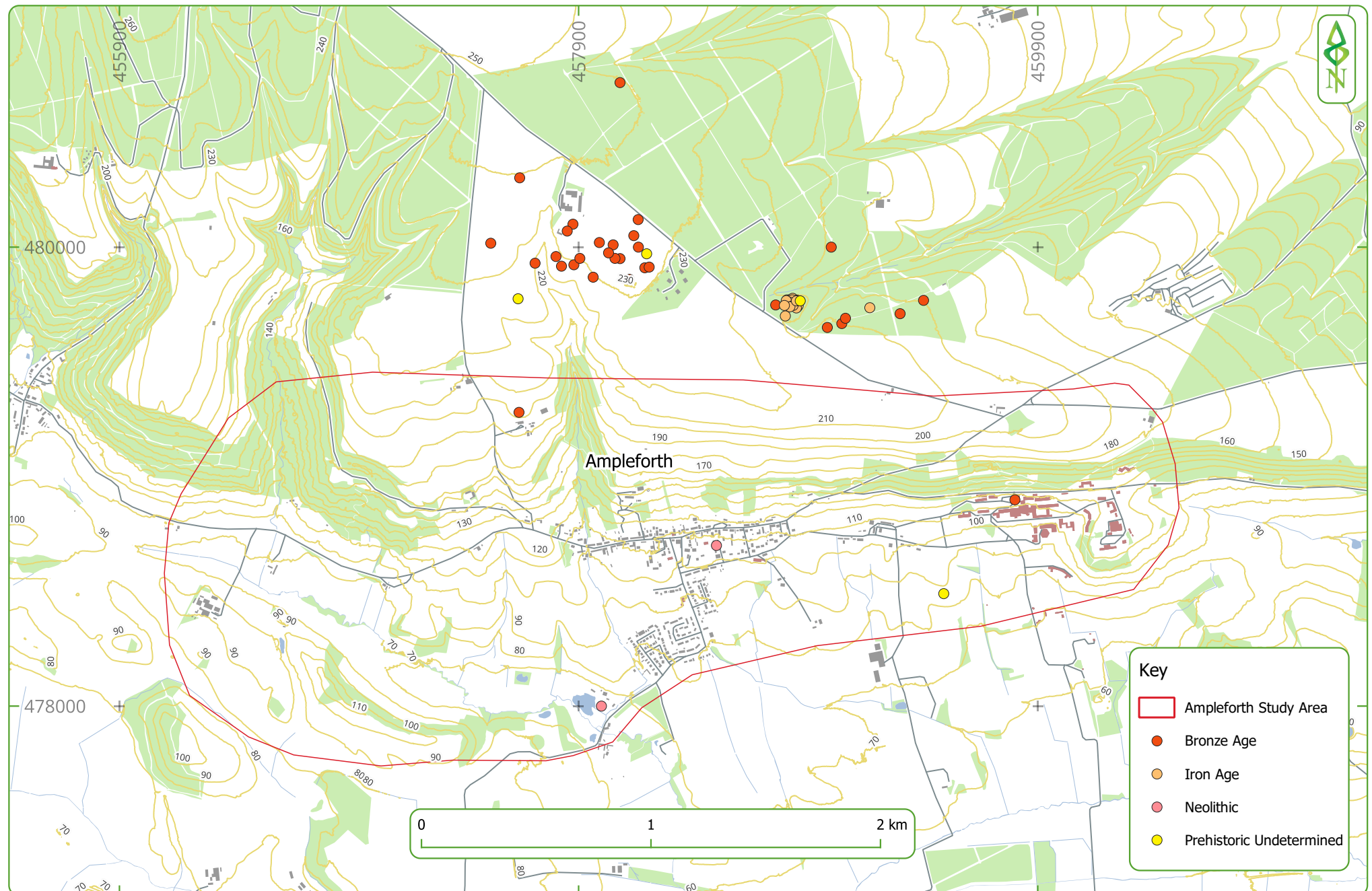


Figure 2. Prehistoric HER entries in and around the Ampleforth study area.

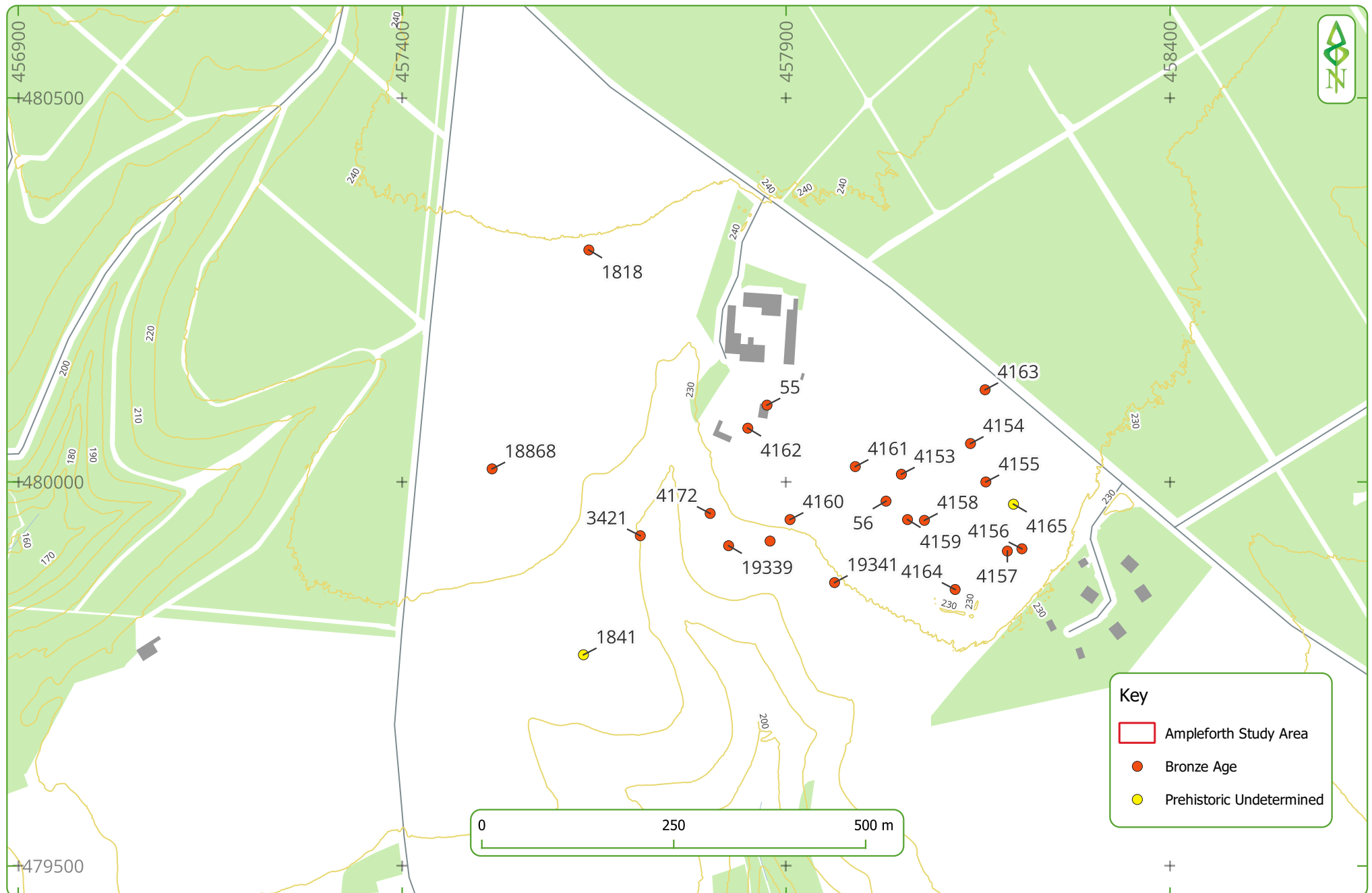


Figure 3. Prehistoric HER points to the North of the Ampleforth study area.

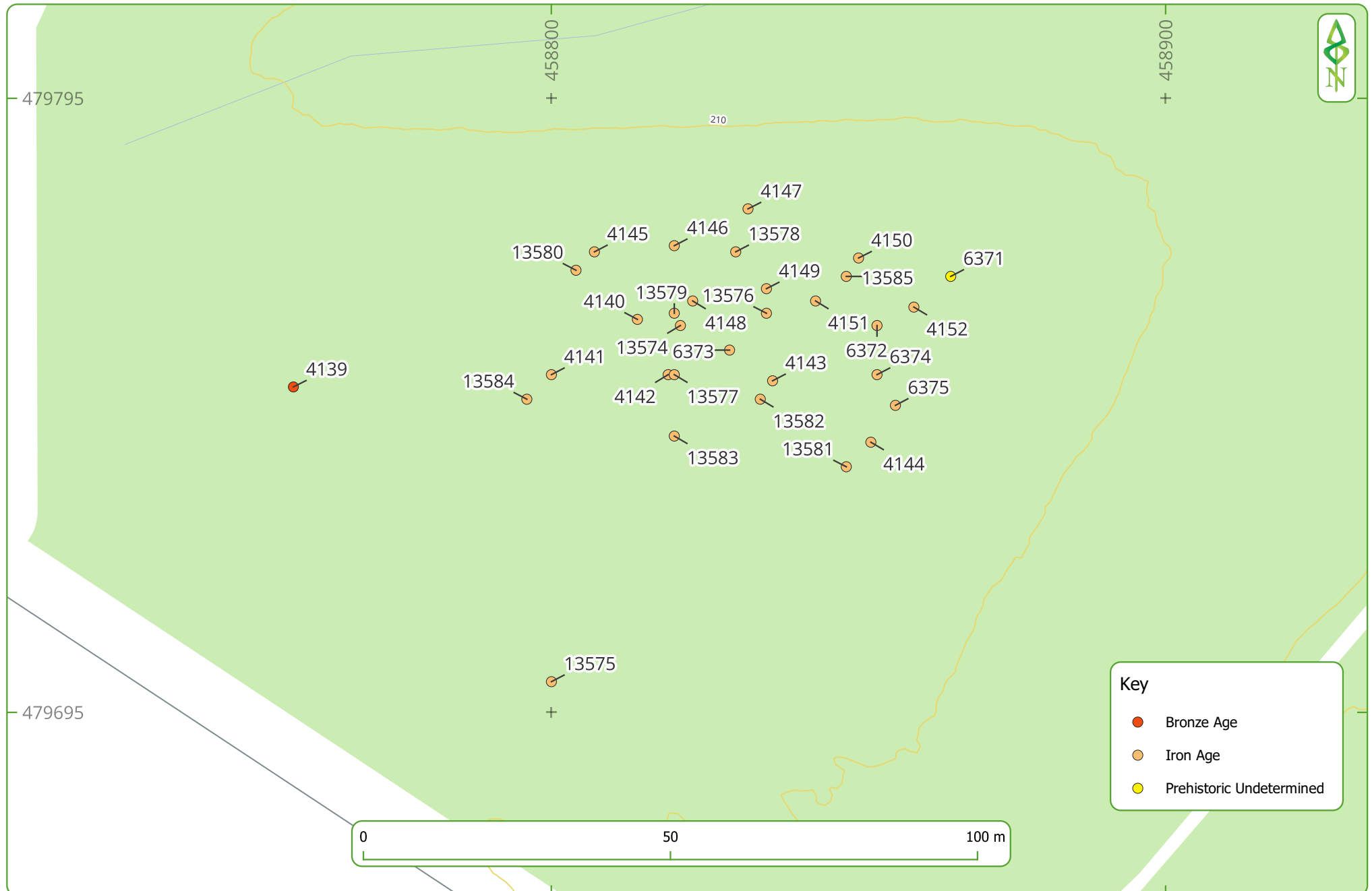


Figure 4. Prehistoric HER points to the North of the Ampleforth study area - Dropping Gill round cairns and square barrow cemetery.



Figure 5. Prehistoric HER points to the Northeast of the Ampleforth study area.



Figure 6. Prehistoric HER points within the Ampleforth study area.



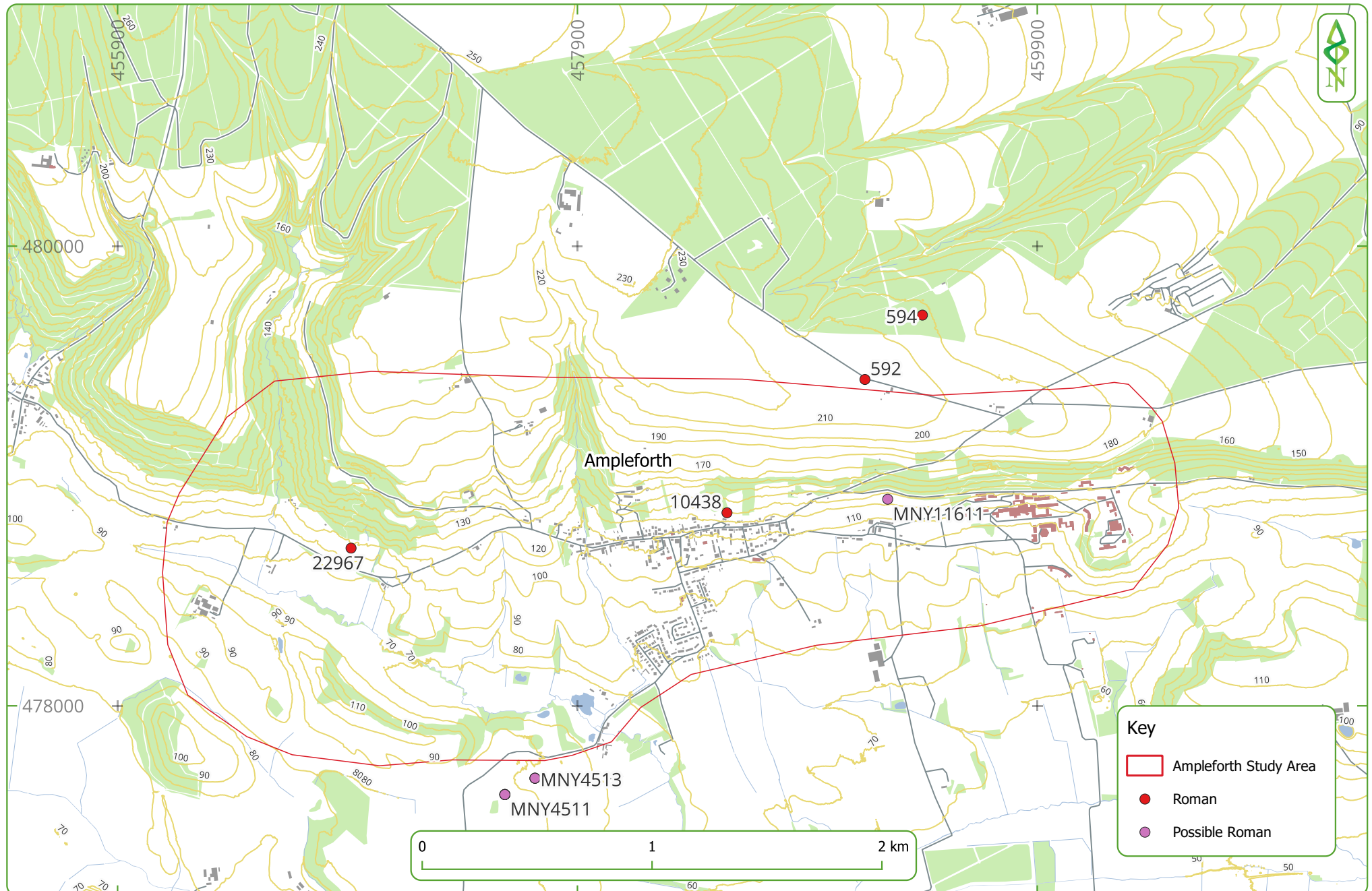


Figure 7. Roman HER entries in and around the Ampleforth study area.



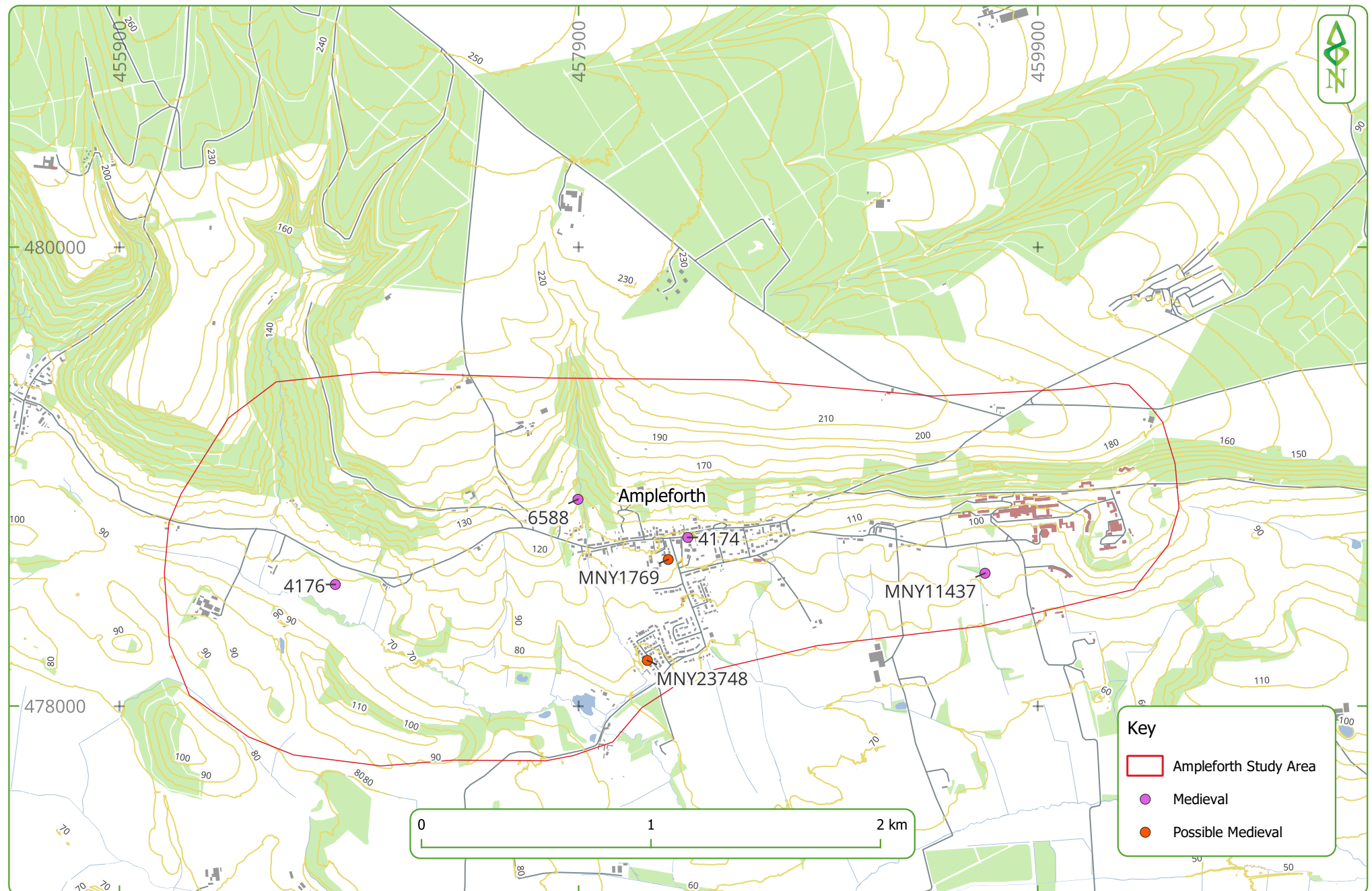


Figure 8. Medieval HER entries in the Ampleforth study area.

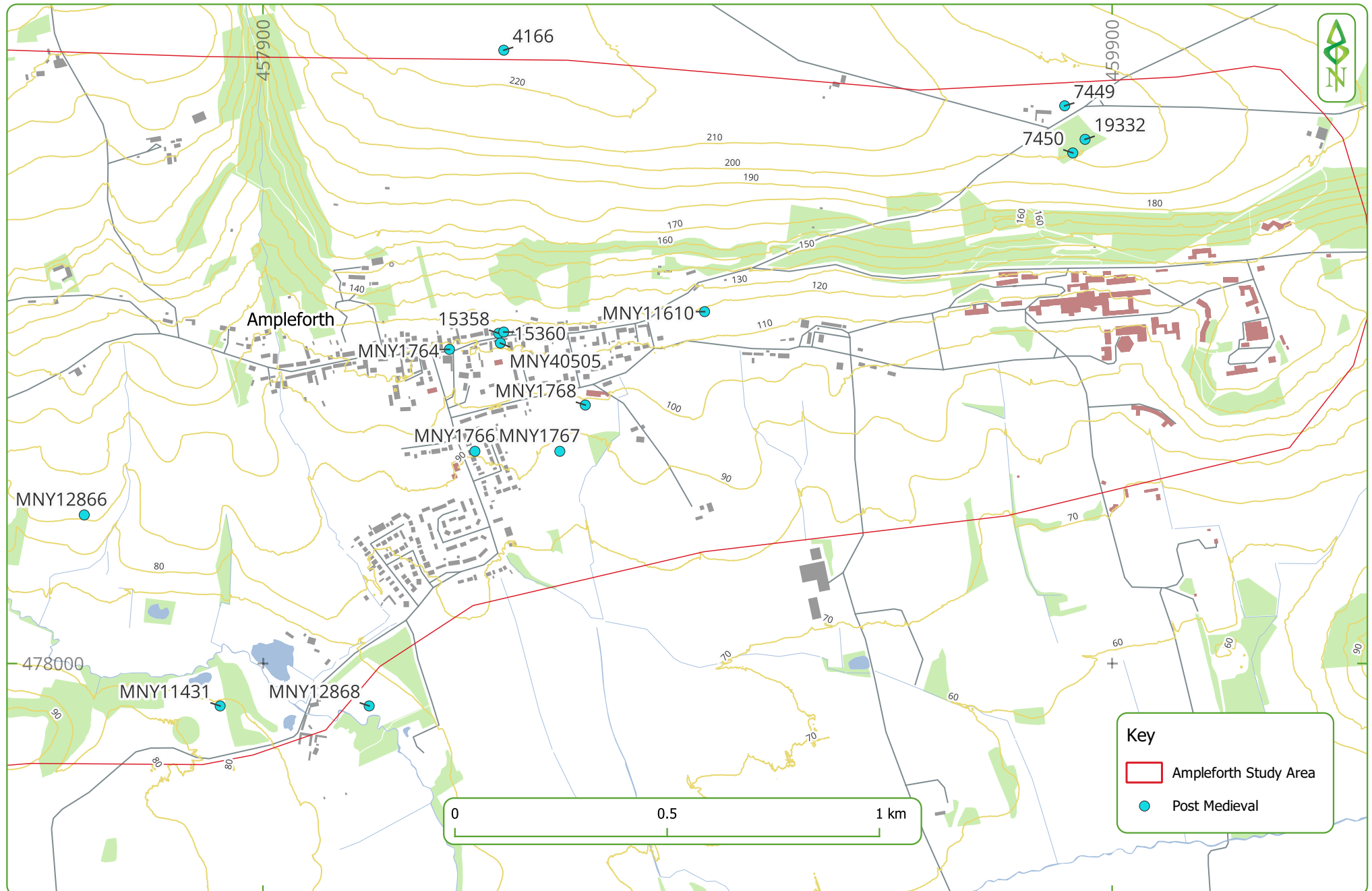


Figure 9. Post Medieval HER entries in the Ampleforth study area.

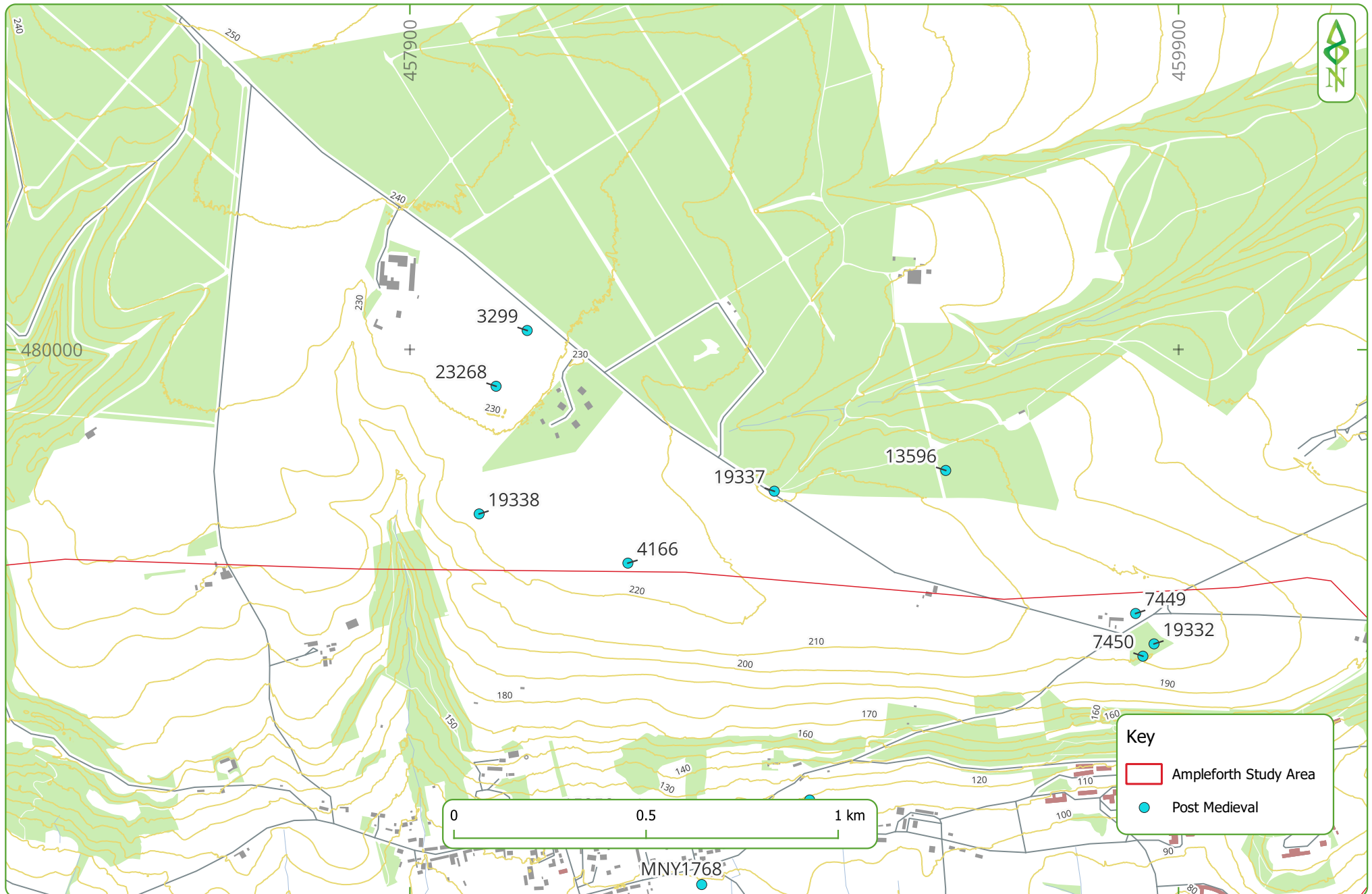


Figure 10. Post Medieval HER entries to the North of the Ampleforth study area.



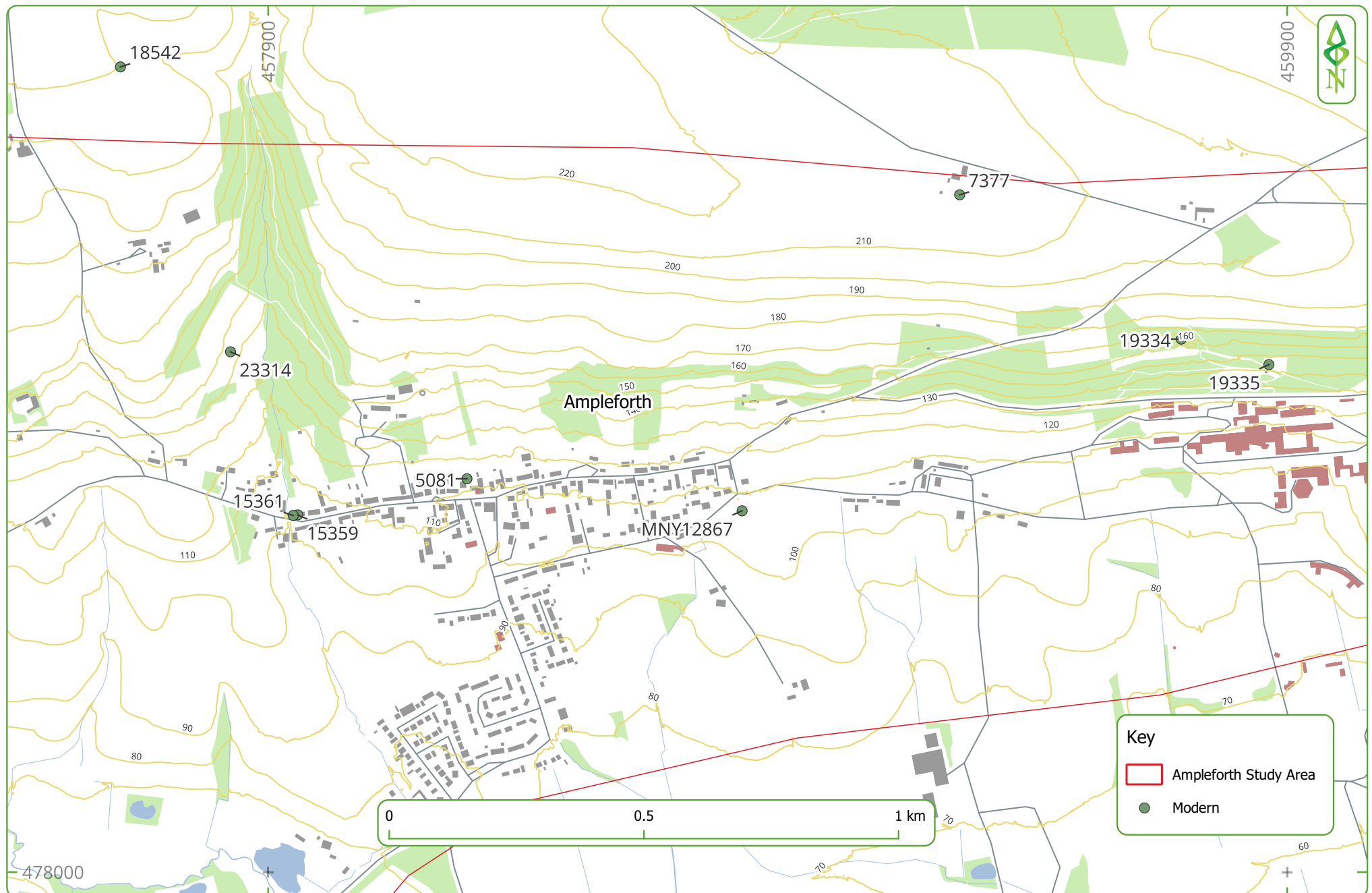


Figure 11. Modern HER entries in the Ampleforth study area.

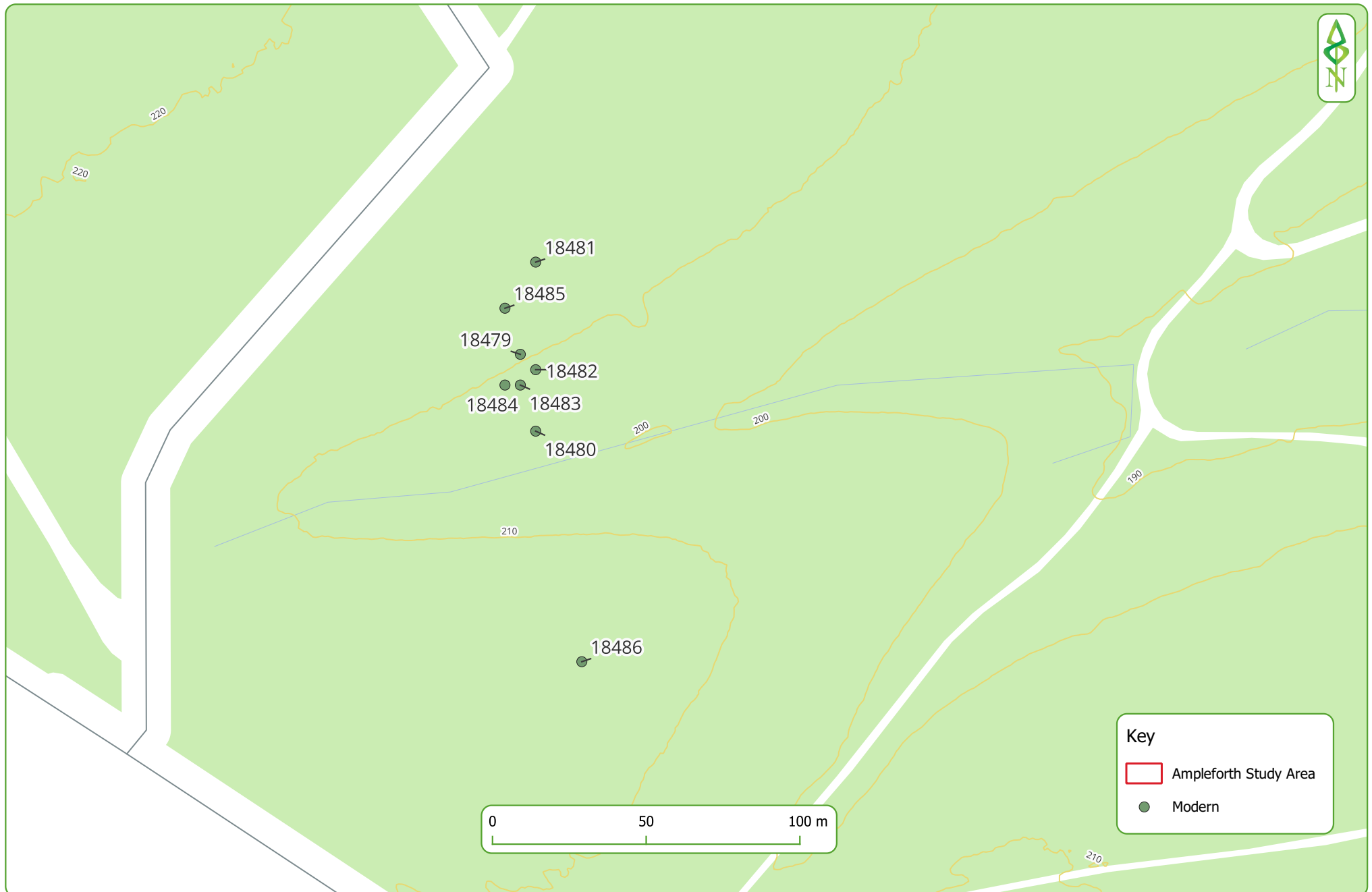


Figure 12. Modern HER entries to the North of the Ampleforth study area.





Figure 13. 1854 Six-inch to the mile first edition Ordnance Survey map, sheet 105; Yorkshire, showing Ampleforth and the surrounding area. Reproduced with the permission of the National Library of Scotland.





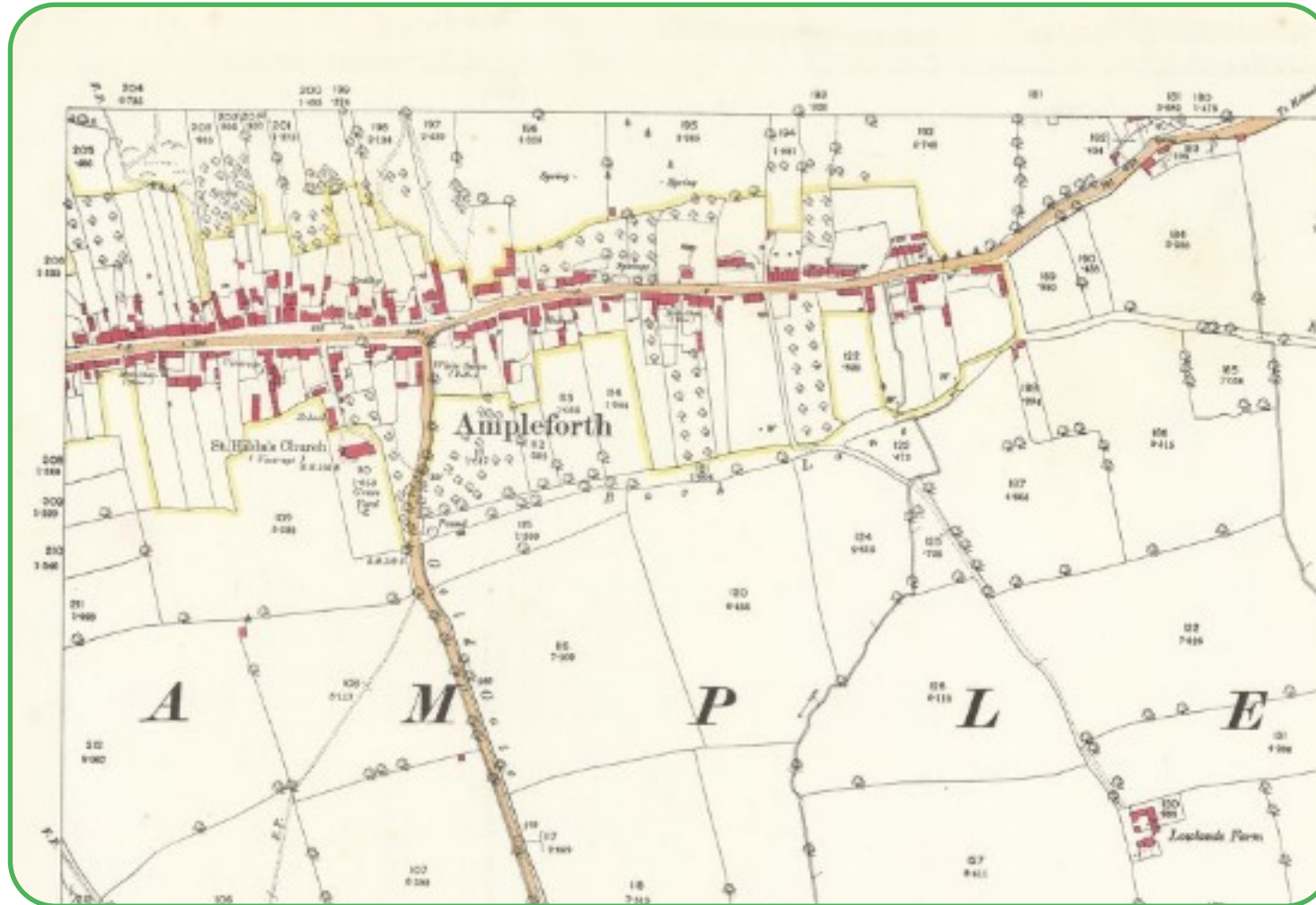
Figure 14. 1854 Six-inch to the mile first edition Ordnance Survey map, sheet 105; Yorkshire, showing Ampleforth College. Reproduced with the permission of the National Library of Scotland.



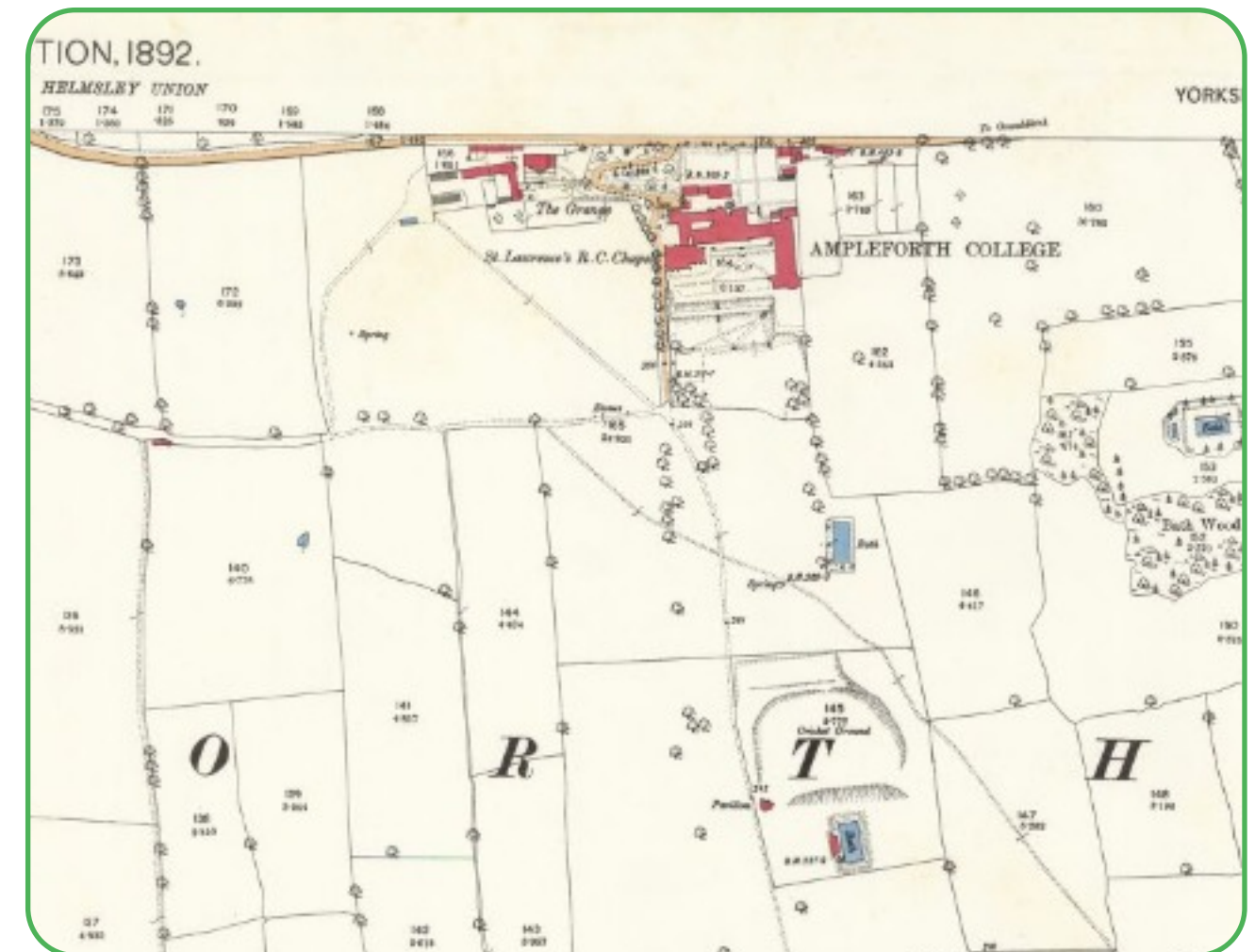


Figure 15. 1854 Six-inch to the mile first edition Ordnance Survey map, sheet 105; Yorkshire, showing area to the North of Ampleforth. Reproduced with the permission of the National Library of Scotland.





1892 25-inch to the mile Ordnance survey map of Ampleforth Village



1892 25-inch to the mile Ordnance survey map of Ampleforth College

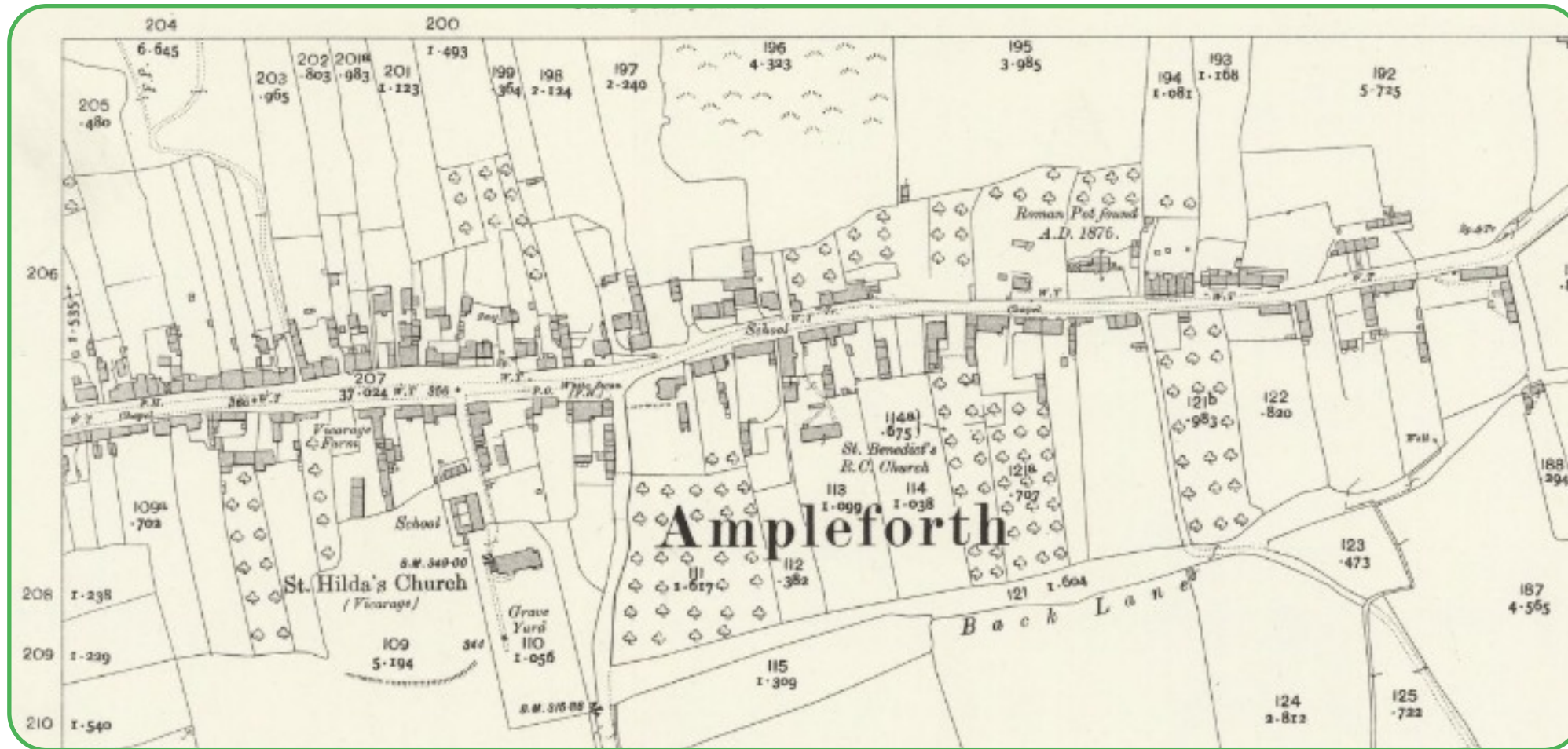
Figure 16. 1892 25-inch to the mile first edition Ordnance Survey map, sheet CV 6; Yorkshire (North Riding). Reproduced with the permission of the National Library of Scotland.



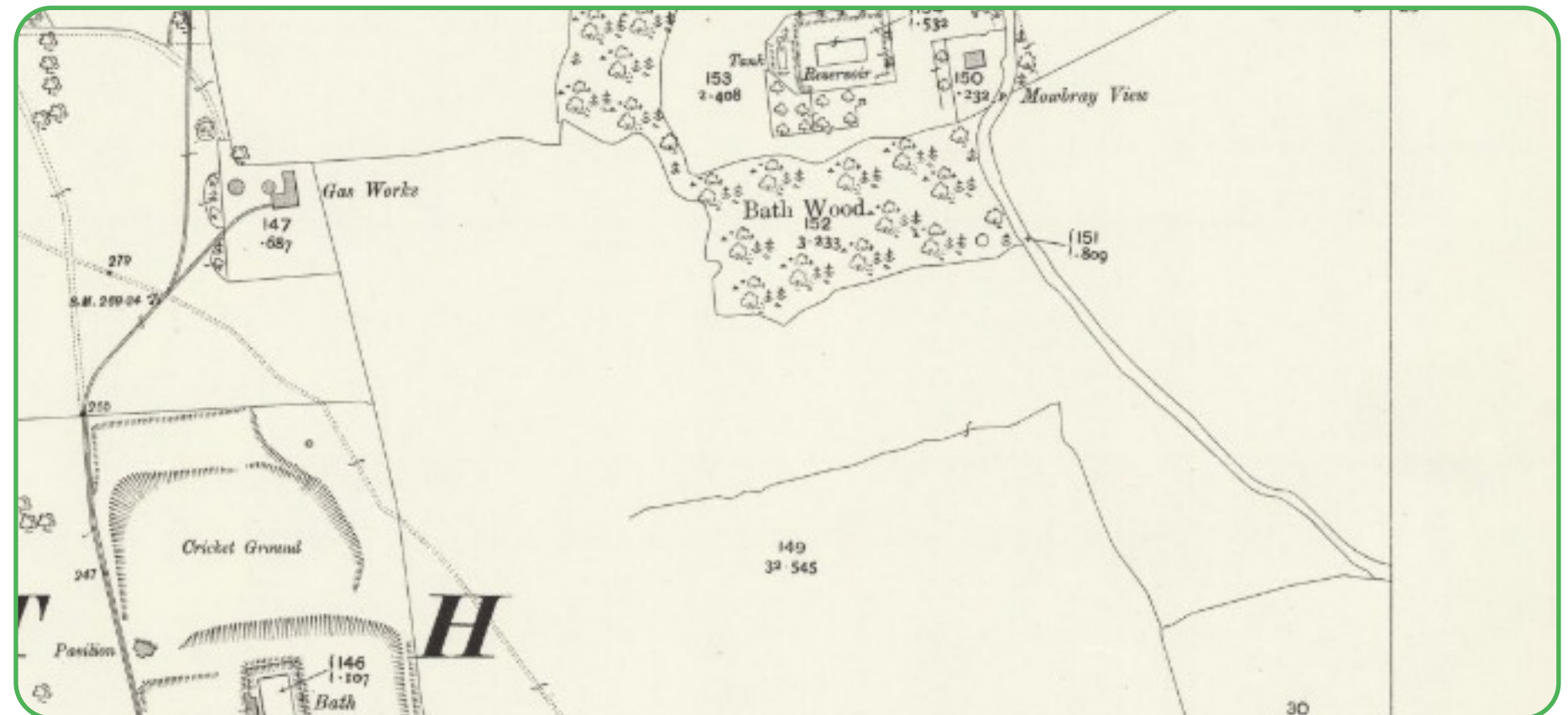


Figure 17. 1895 6-inch to the mile Ordnance Survey map, sheet CV NW; Yorkshire (North Riding). Reproduced with the permission of the National Library of Scotland.





1911 25-inch to the mile Ordnance Survey map of Ampleforth Village



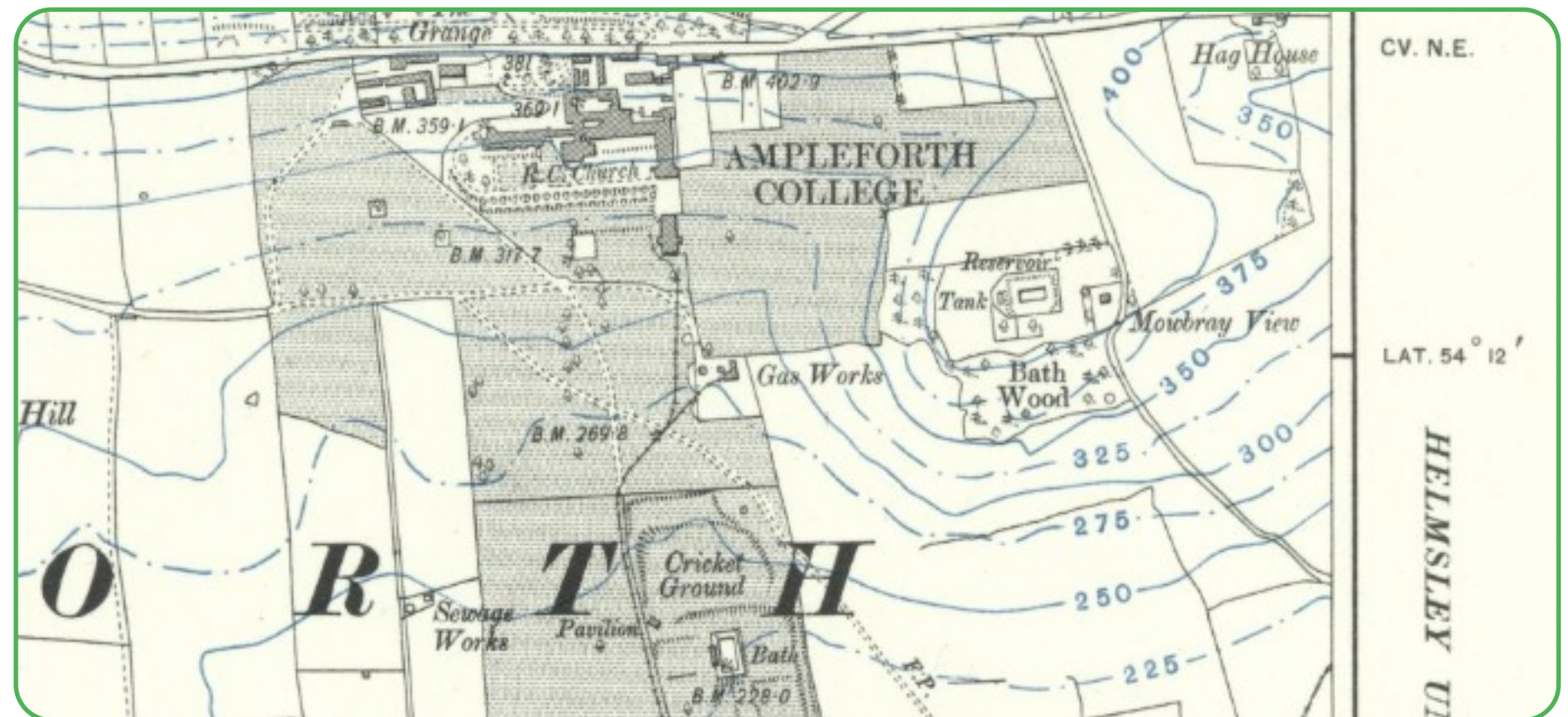
1911 25-inch to the mile Ordnance Survey map of Ampleforth College

Figure 18. 1911 25-inch to the mile Ordnance Survey map, sheet CV 6; Yorkshire (North Riding). Reproduced with the permission of the National Library of Scotland.





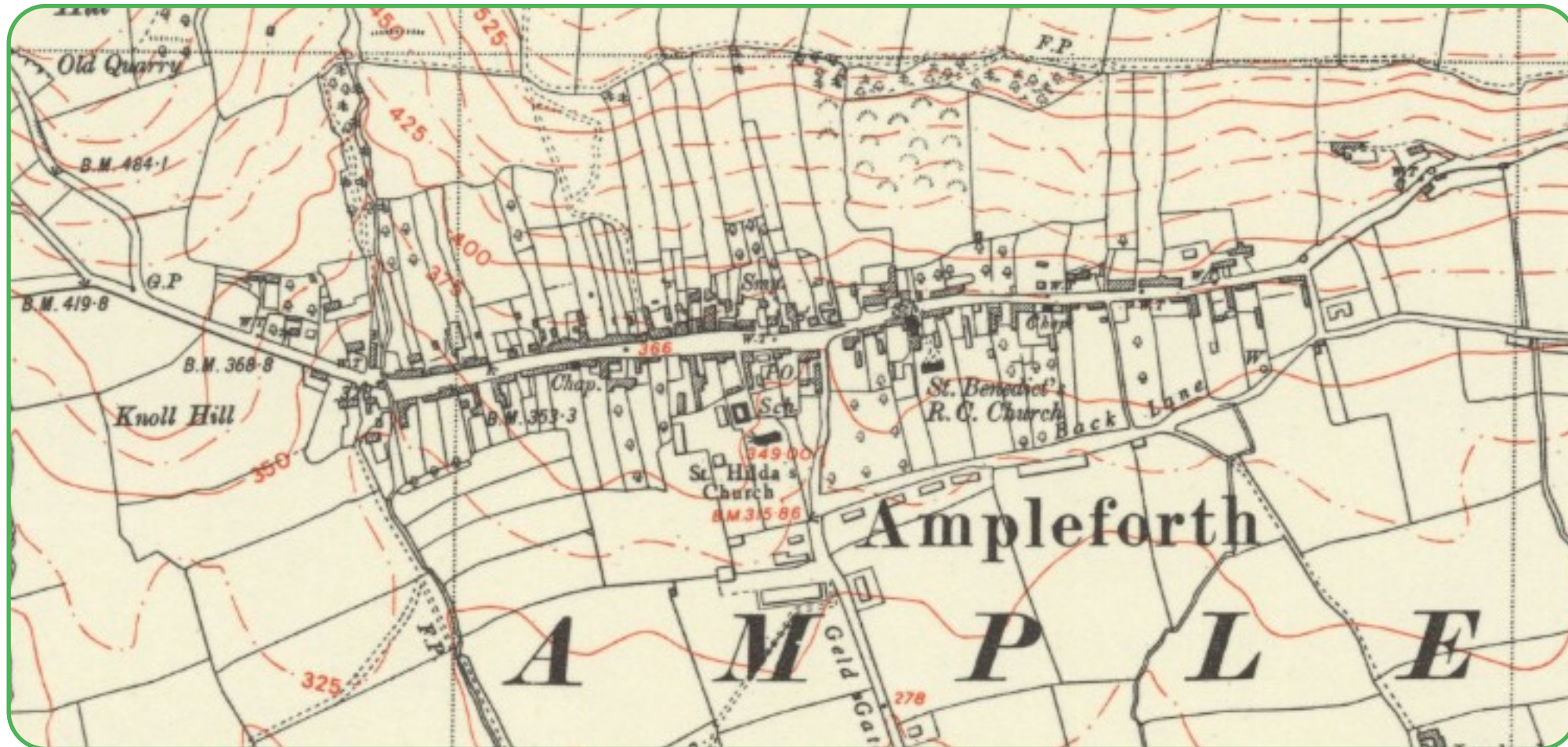
1913 six-inch to the mile Ordnance Survey map of Ampleforth Village



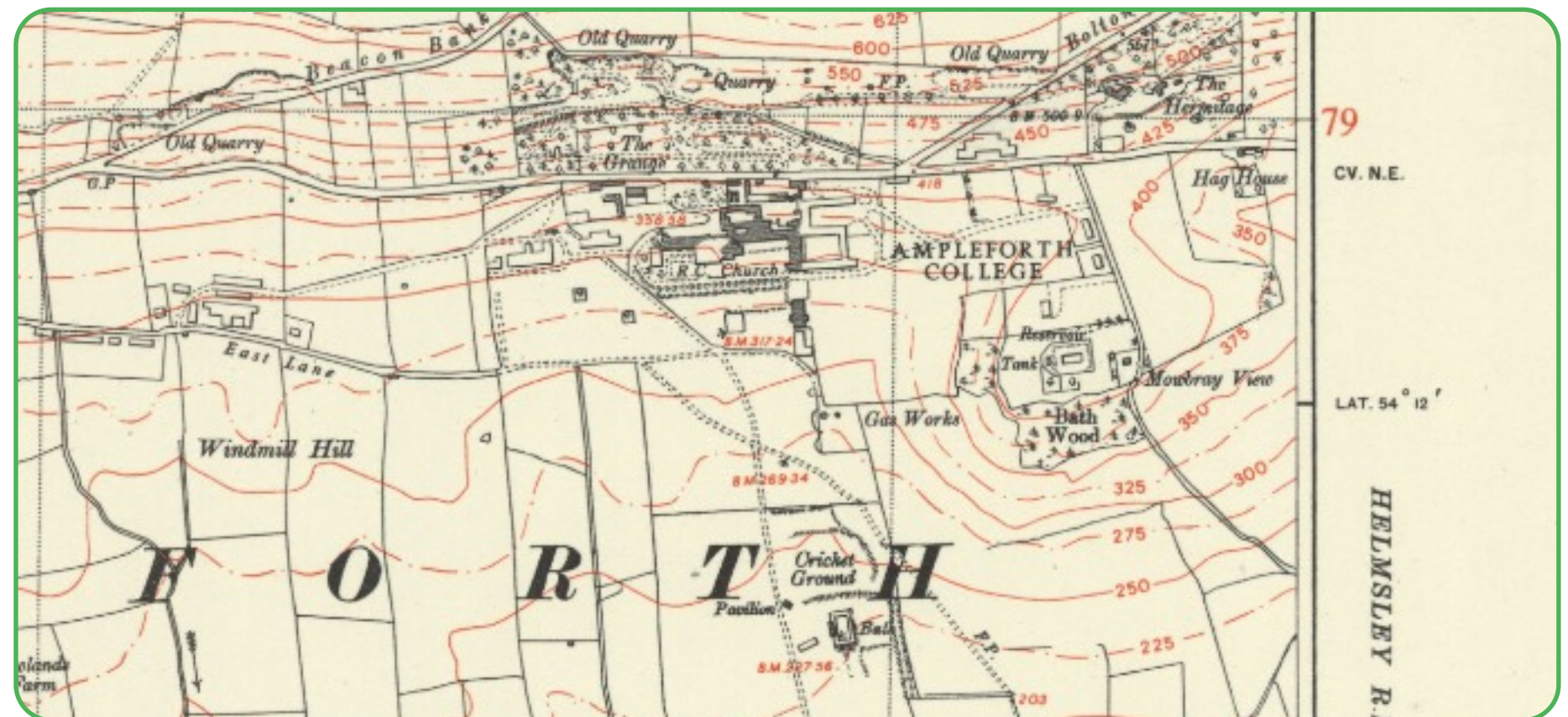
1911 six-inch to the mile Ordnance Survey map of Ampleforth College

Figure 19. 1913 six-inch to the mile Ordnance Survey map, sheet CV NW; Yorkshire (North Riding). Reproduced with the permission of the National Library of Scotland.





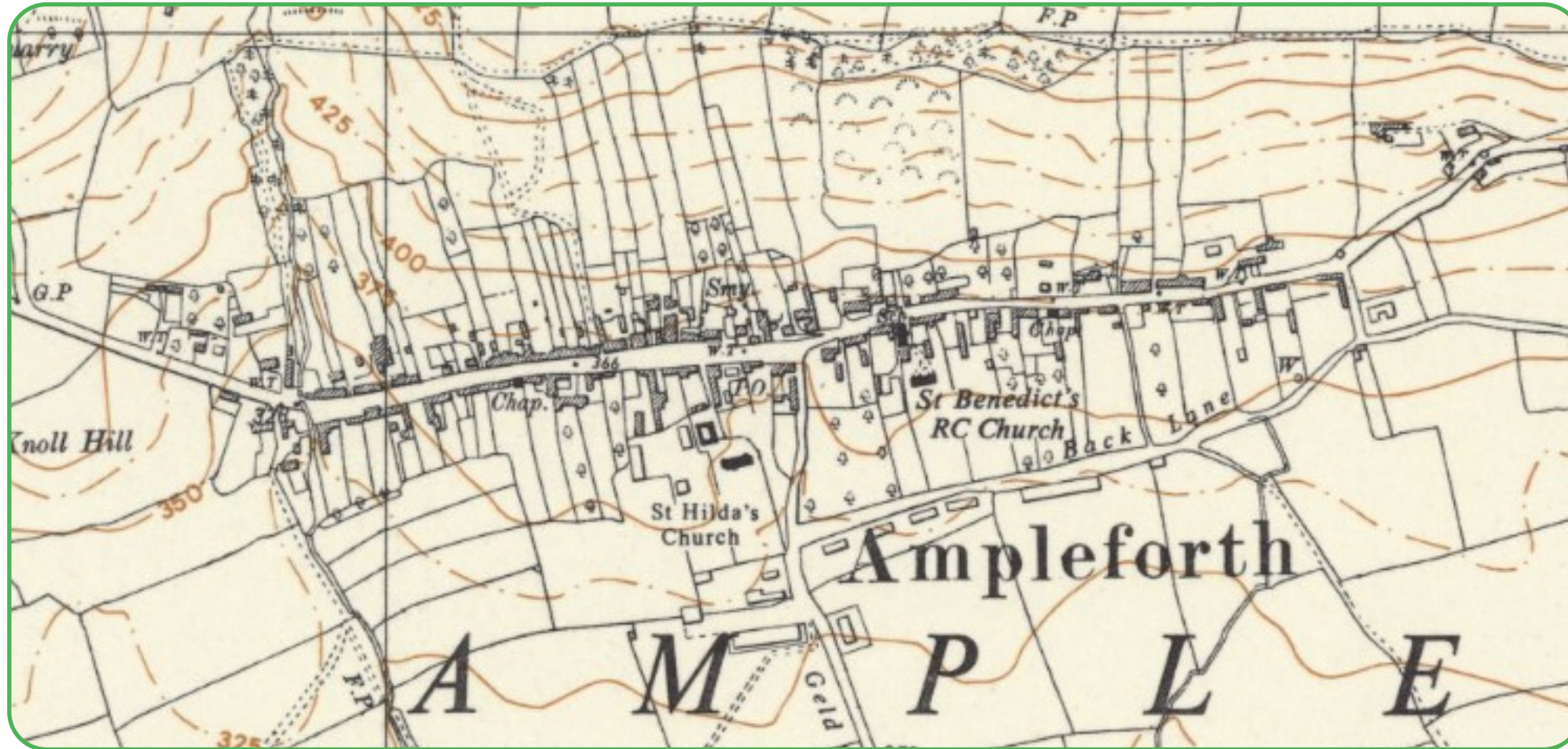
1952 six-inch to the mile Ordnance Survey map of Ampleforth Village



1952 six-inch to the mile Ordnance Survey map of Ampleforth College

Figure 20. 1952 six-inch to the mile Ordnance Survey map, sheet CV NW; Yorkshire (North Riding). Reproduced with the permission of the National Library of Scotland.





1958 six-inch to the mile Ordnance Survey map of Ampleforth Village



1958 six-inch to the mile Ordnance Survey map of Ampleforth College

Figure 21. 1958 six-inch to the mile Ordnance Survey map, sheet SE 57 NE; Yorkshire. Reproduced with the permission of the National Library of Scotland.



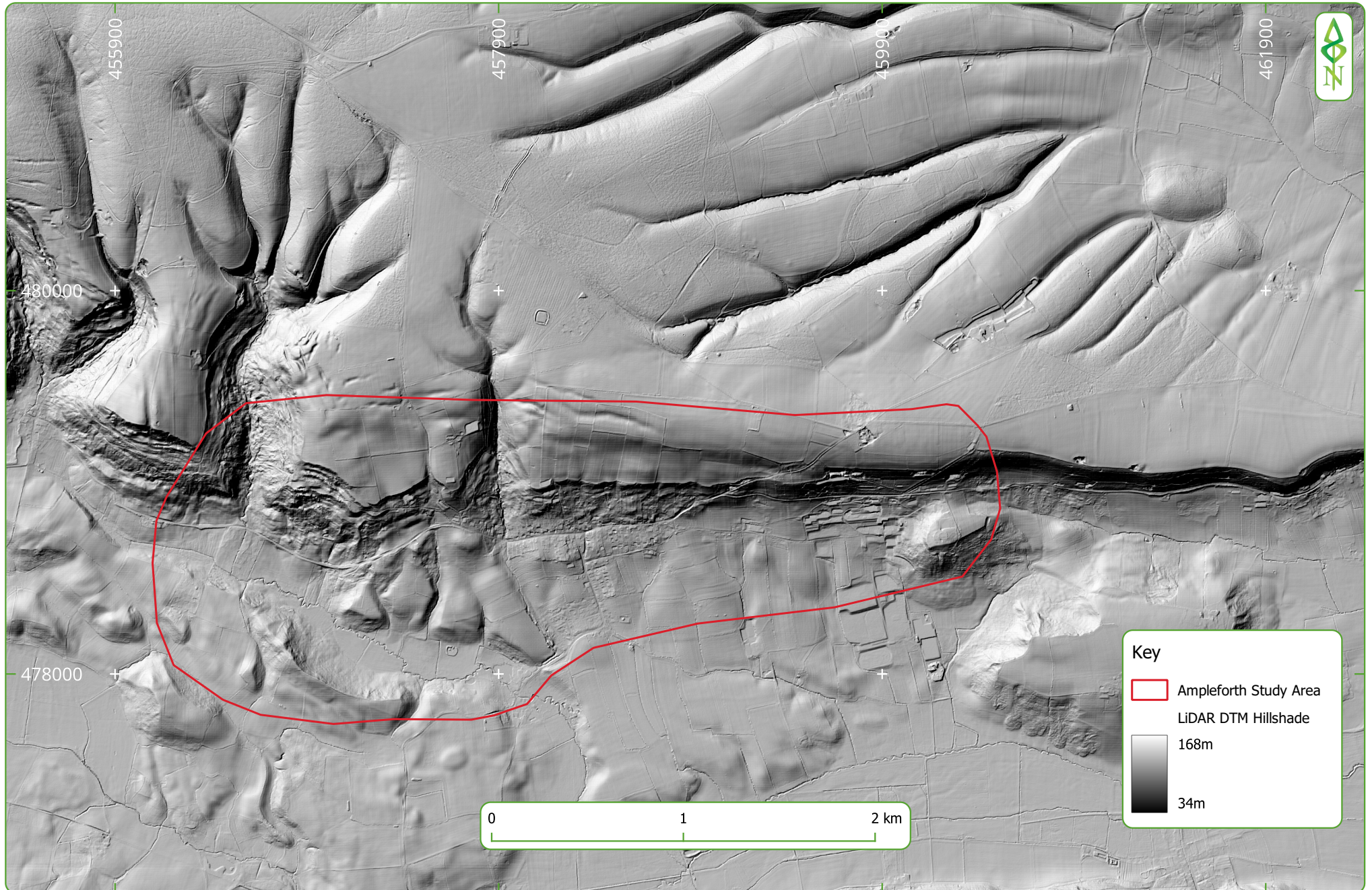


Figure 22. LiDAR 1m DTM with Hillshade elevation scale.



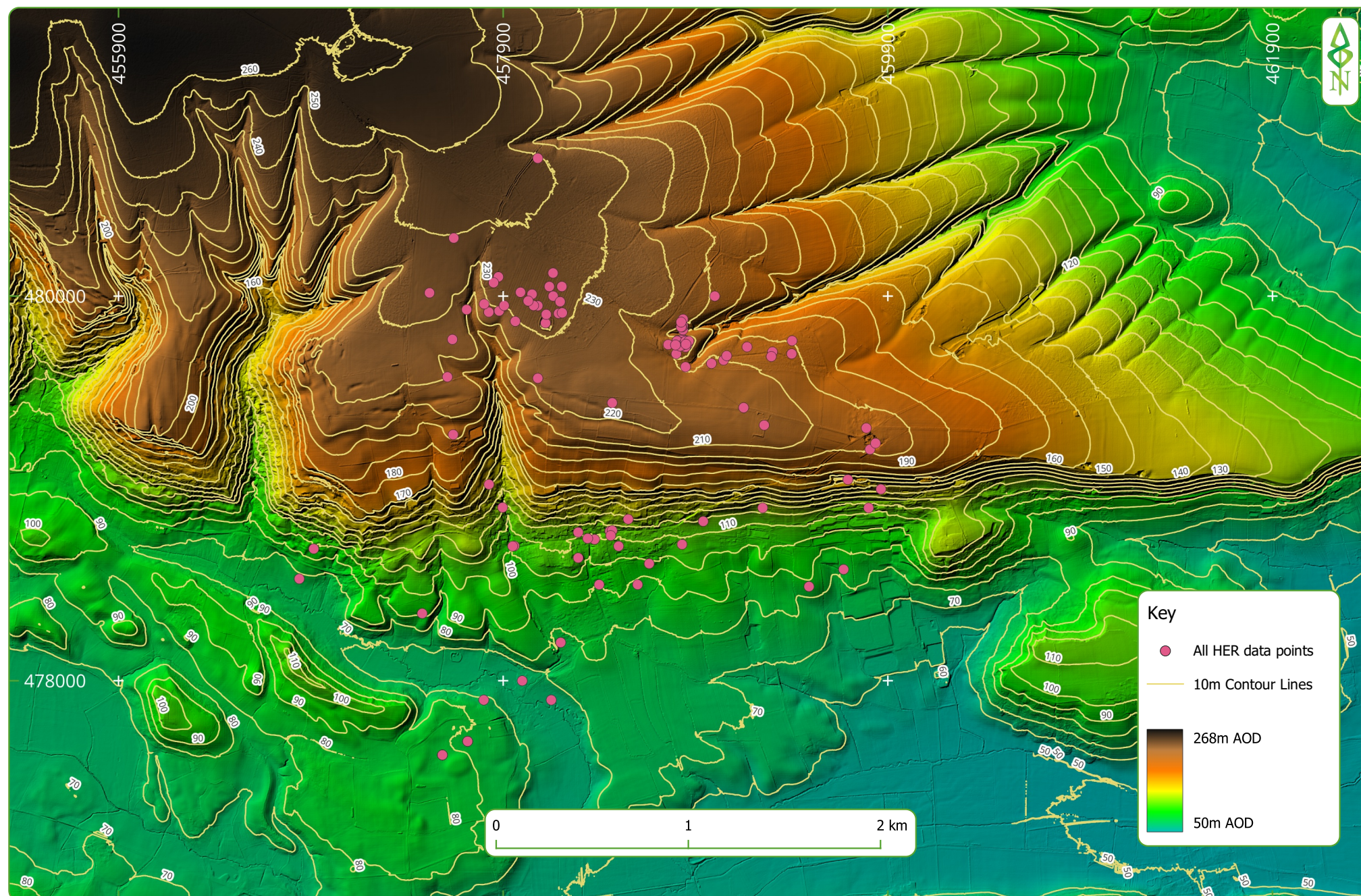


Figure 23. LiDAR 1m DTM with colour elevation scale and all HER data points.



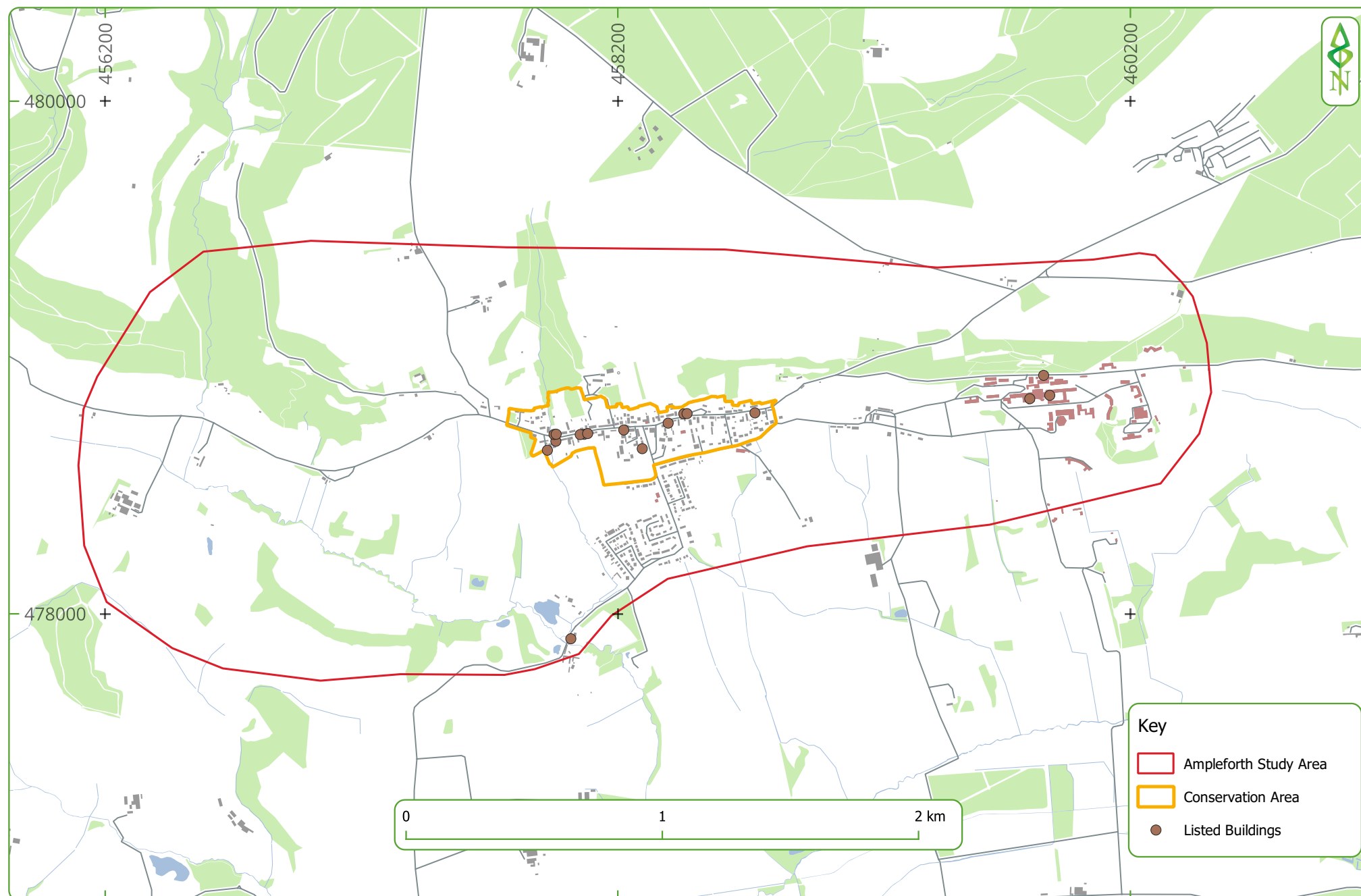


Figure 24. Conservation area and Historic England listed buildings in the Ampleforth Study Area.